

# **Historic, Archive Document**

Do not assume content reflects current scientific knowledge, policies, or practices.



62.13

Catalogue . . .  
of .



Robert Veitch Son.  
New Haven  
Conn.

974 Chapel Street  
Telephone 709-3

. . . and  
Seeds  
Plants

# CONTENTS.

---

	Page.
Fertilizers, . . . . .	18
Flower Seeds, . . . . .	19-30
Floral Requisites, . . . . .	18
Herb Seeds, . . . . .	17
Miscellaneous, . . . . .	17
Vegetable Seeds, . . . . .	3-16
Vegetable Plants, . . . . .	17-18
<hr/>	
Bedding Plants, . . . . .	31-33
Bulbous Roots, . . . . .	34
Cannas, . . . . .	34-35
Carnations, . . . . .	34
Chrysanthemums, . . . . .	35-39
Dahlias, . . . . .	40-41
Decorative Plants, . . . . .	43
Ferns, . . . . .	50
Fuchsias, . . . . .	41
Geraniums, . . . . .	42-43
Hardy Herbaceous Plants, . . . . .	44-45
Hardy Running Vines, . . . . .	46
Ornamental Leaved Plants, . . . . .	46
Pansies, . . . . .	46
Plants for Baskets, . . . . .	47
Roses, . . . . .	48-50
Trees, Shrubs, etc., . . . . .	50

Robert Veitch & Son's . .

---

CATALOGUE

OF

*SEEDS AND PLANTS*

FOR

.. SPRING, 1898..

---

---



IMPORTERS, GROWERS AND DEALERS IN

SEEDS, PLANTS, BULBS AND FLOWERS

974 CHAPEL STREET

Established 1854...

NEW HAVEN, CONN.

## NOTICE.

---

Though we thoroughly test our seeds before sending them out, many seeds of the best possible quality will fail through improper treatment. More failures result from this than from any other cause. The necessary conditions are, a proper temperature, sufficient moisture, and free access of air; if the surface of the soil gets baked by heavy rains, it will be impossible for the young seedling plants to force their way through, and the Seedsman is blamed in consequence. For these reasons we explicitly state *that, while we exercise the greatest care to have all seeds pure and reliable, we do not give any warranty, expressed or implied.*

If the purchaser does not accept the seeds on these conditions, they must be returned at once.

**SEEDS BY MAIL.**—All seeds, in packages and by the ounce, will be sent by mail at Catalogue prices, postage prepaid, but seeds by the pound *require an extra payment of eight cents per pound.*—*Corn, Peas and Beans require an extra payment of fifteen cents per quart to prepay postage.*

**PLANTS BY MAIL.**—All plants will be sent by Mail, postage prepaid, at the prices quoted for single plants, *but at dozen rates ten per cent. addition* to the price must be sent to prepay postage.

No charge for baskets, boxes, or packing on any order exceeding \$1.00 in value. Bags charged at cost price, and credited on account if returned in good condition within thirty days after date of purchase.

All orders from unknown correspondents must be accompanied with a remittance or satisfactory reference. To regular customers accounts are payable July 1, 1898.

Address,

ROBERT VEITCH & SON,

NEW HAVEN, CONN.

Telephone, 709-3.

## VEGETABLE SEEDS.

---

Not less than one-quarter pound will be furnished at pound rates, nor less than four quarts at peck rates. Orders for less than these quantities will be charged at ounce and quart prices.

All seeds may be put up in five-cent papers, excepting Corn, Peas and Beans, and those varieties specially priced.

Any customer enclosing \$1.00 may select Vegetable Seeds *in papers only* to the amount of \$1.25, which will be sent free by mail.

### *Asparagus.*

	Lb.	Oz.
<i>Barr's Mammoth</i> .....	\$0.60	\$0.06
<i>Palmetto</i> , very early, large variety.....	.60	.06
<i>Conover's Colossal</i> , extra size.....	.50	.06
" " Roots 2 yrs. old, per 1000, \$6.00, per 100, \$0.80.		

### *Beans, Bush or String.*

	Pk.	Qt.
<i>Burpee's Bush Lima</i> , a large seeded Lima, fine large pods, abundant bearing, dwarf branching habit....	1.75	.25
<i>Early Mohawk</i> .....	1.00	.20
<i>Early China Dwarf</i> , red eye.....	1.00	.20
<i>Improved Early Valentine</i> , round pods.....	1.00	.20
<i>Long Yellow Six Weeks</i> , standard early sort.....	1.00	.20
<i>Refugee</i> , or <i>1,000 to 1</i> , best for late use or pickling purposes .....	1.00	.20
<i>Long White Kidney</i> .....	1.00	.20
<i>White Cranberry or Marrow</i> .....	1.00	.20

### WAX POD VARIETIES.

<i>Currie's Rust Proof Wax</i> , clear yellow pod, growing to perfection in the most unfavorable seasons.....	1.25	.20
<i>Wardwell's Kidney Wax</i> , very hardy, robust habit, abundant bearer .....	1.25	.20
<i>Golden Pod Wax</i> , large flat pods, very tender.....	1.25	.20
<i>Black Wax</i> , abundant bearer, round pods.....	1.25	.20
<i>Yosemite Mammoth Wax</i> , very long, tender pods, of most delicate quality, very abundant bearer.....		.30

**Beans, Pole or Running.**

	P	Qt.
<i>Early Dutch Case Knife</i> .....	\$1.50	\$0.25
<i>Speckled Cranberry, or London Horticultural</i> .....	1.50	.25
<i>Scarlet Running, ornamental flowers, pkt. 5c.</i> .....		.30
<i>Large White Lima, an extra selected stock of this favorite variety</i> .....	1.50	.25
<i>King of the Garden Lima, produces large, well-filled pods</i> .....	1.50	.25
<i>Dreer's Improved Lima, an early, very prolific variety of superior quality</i> .....	1.50	.25

**Beet.**

## TABLE VARIETIES.

	Lb.	Oz.
<i>Eclipse, an early, very smooth variety with small top, flesh dark blood color, sweet and fine grained</i> ....	.60	.08
<i>Egyptian Turnip-Rooted, very early sort, roots of a deep crimson color, and fine flavor</i> .....	.60	.08
<i>Crosby's Egyptian, large and smooth</i> .....	.60	.08
<i>Columbia, early, very fine shape</i> .....	.60	.08
<i>Early French Bassano, flat shape, color light red</i> ....	.50	.06
<i>Bastian's Blood Turnip</i> .....	.50	.06
<i>Edmand's Blood Turnip</i> .....	.50	.06
<i>Lentz's Blood Turnip</i> .....	.50	.06
<i>Dewing's Red Turnip</i> .....	.50	.06
<i>Swiss Chard, or Silver, cultivated for the leaves</i> ....	.60	.08

## VARIETIES FOR FEEDING STOCK.

<i>Vilmorins' Improved Long White Sugar</i> .....	.40	.05
<i>Norbiton Giant Mangel, deep scarlet, very solid</i> .....	.40	.05
<i>Kinver Yellow Globe Mangel, very fine stock, smooth handsome roots, of great weight</i> .....	.40	.05

**Brussels Sprouts.**

<i>French Seed, producing an abundance of sprouts, resembling small cabbages</i> .....	1.50	.15
--	------	-----

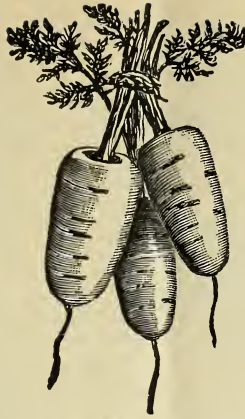
**Cabbage.**

<i>Early Winningstadt, heads conical, very solid</i> .....	2.00	.20
<i>Improved Jersey Wakefield, large uniform size, popular sort for early market</i> .....	2.50	.25
<i>Early Summer, the earliest of all large varieties, heads solid and compact</i> .....	2.50	.25
<i>Early Flat Dutch, very fine sort</i> .....	2.50	.25





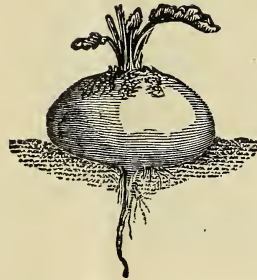
Danvers Carrot.



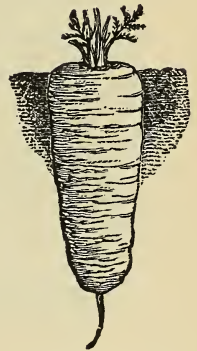
Scarlet Horn Carrot.



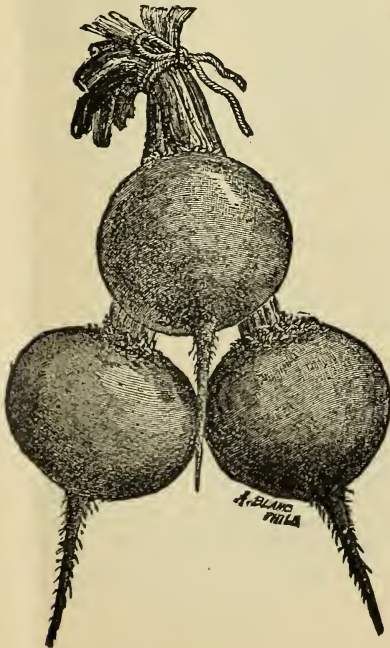
French Horn Carrot.



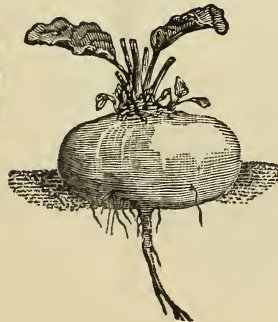
Dewing's Turnip Beet.



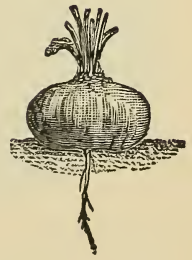
Nantes Carrot.



Eclipse Beet.



Bassano Beet.



Egyptian Beet.

	Lb.	Oz.
<i>Burpee's Sure Head</i> , firm heads of good size, reliable heading variety in the most unfavorable seasons. . .	\$2.50	\$0.25
<i>All Seasons</i> , a very large early variety, of excellent keeping quality . . . . .	2.50	.25
<i>Succession</i> , one of the finest second early sorts, solid and sure heading . . . . .	2.50	.25
<i>Fotler's Improved Brunswick</i> , the earliest hard-heading variety; a good keeping sort. . . . .	2.50	.25
<i>Premium Flat Dutch</i> (selected stock) best for winter. .	2.00	.20
<i>Drumhead, Large American</i> , very solid. . . . .	2.00	.20
<i>Savoy, Improved American Drumhead</i> . . . . .	3.00	.30
<i>Mammoth Rock Red</i> , very large solid heads, of a uniform dark red color. . . . .	3.00	.30

### *Carrot.*

<i>Early French Horn</i> , for forcing. . . . .	1.00	.10
<i>Early Scarlet Horn</i> , stump rooted. . . . .	1.00	.10
<i>Half Long Scarlet Nantes</i> , large stump-rooted variety, quite early, also good for fall use. . . . .	1.00	.10
<i>Chantenay, Half Long Scarlet</i> , a very large productive stump-rooted variety . . . . .	1.00	.10
<i>Guerande or Oxheart</i> , short thick roots, excellent for table use . . . . .	1.00	.10
<i>Danver's Orange</i> , rich dark orange roots, very smooth and handsome, heavy cropper. . . . .	.80	.08
<i>Long Orange</i> , best for winter use. . . . .	.80	.08

### *Cauliflower.*

	Pkt.	Oz.
<i>Early Snowball</i> , large white compact heads, dwarf habit and small outer leaves, $\frac{1}{4}$ oz. 75c. . . . .	.25	2.50

### *Celery.*

	Lb.	Oz.
<i>Boston Market</i> , short, compact and solid. . . . .	2.00	.20
<i>Dwarf Rose</i> , a good keeping sort, very solid, and most delicate flavor . . . . .	2.50	.25
<i>Golden Heart Half Dwarf</i> ; when blanched, the heart is a waxy golden color, very solid. . . . .	2.00	.20
<i>Golden, Self-blanching</i> , deep golden yellow, excellent keeper, early . . . . .	5.00	.50
<i>Kalamazoo</i> , very large, solid white variety. . . . .	2.00	.20
<i>White Paschal</i> , very broad, thick stalks. . . . .	2.00	.20
<i>Perfection Heartwell</i> , a strong growing variety, well adapted for cultivation in light soil. . . . .	2.00	.20
<i>White Plume</i> . The inner leaves are white, so that by simply closing the stalks, the work of blanching is completed . . . . .	3.00	.30



Early Flat Dutch Cabbage.



Premium Flat Dutch Cabbage.



Wakefield Cabbage.



Drumhead Savoy Cabbage.



Succession Cabbage.



Fotler's Brunswick Cabbage.



Snowball Cauliflower.

	Lb.	Oz.
<i>Pink Plume</i> .....	\$3.00	\$0.30
<i>Old Seed</i> , for soups or flavoring.....	.40	.05
<i>Largest Erfurt Celeriac</i> , turnip rooted.....	2.50	.25

### ***Corn Salad, or Lamb's Lettuce.***

Used as a salad through the winter and spring.....	.75	.08
--	-----	-----

### ***Corn, Sweet or Sugar.***

	Dozen Ears.	Ears.
<i>Early White Cob Cory</i> , the earliest white cob variety, medium size, large kernels, and good quality.....	.40	.05
<i>Extra Early Cory</i> , the earliest of the large red cob varieties yet introduced.....	.40	.05
<i>Early Minnesota</i> , fine quality, very dwarf.....	.40	.05
<i>Perry's Hybrid</i> .....	.40	.05
<i>Black Mexican</i> .....	.50	.05
<i>Early Mammoth</i> .....	.50	.05
<i>Country Gentleman</i> , an improved large type of the <i>Ne plus ultra</i> or <i>Shoe Peg</i> ; for quality and flavor it is unexcelled .....	.40	.05
<i>Pee and Kay</i> , ears large and thick.....	.40	.05
<i>Moore's Concord</i> , ears large and well filled.....	.40	.05
<i>Triumph</i> .....	.40	.05
<i>Hickox's Improved</i> , handsome ears, very white, rich flavored, one of the best for general use.....	.50	.05
<i>Stowell's Evergreen</i> , best keeping sort, qt. 20c.....	.50	.05
<i>California Mammoth</i> , large ears, rich and sweet.....	.50	.05
<i>Sweet Fodder</i> , per bushel \$2.00, qt. 15c.		

### ***Cress, or Peppergrass.***

	Lb.	Oz.
<i>Extra Curled</i> . much used as a salad.....	.50	.05

### ***Cucumber.***

<i>Extra Early Russian</i> , earliest, good for pickles.....	.75	.08
<i>Early Green Cluster</i> , very early and productive.....	.75	.08
<i>Early White Spine</i> , great bearer, best for market.....	.75	.08
<i>Everbearing</i> , excellent for pickles.....	.75	.08
<i>Nichols' Medium Green</i> , very productive, medium size, straight and smooth.....	.75	.08
<i>Boston Pickling</i> , very productive, of superior quality..	.75	.08
<i>Jersey Pickling</i> , fine shape, prolific.....	.75	.08
<i>London Long Green</i> . dark green, firm and crisp.....	.75	.06
<i>Gherkin, West Indian or Burr</i> , very small.....	1.50	.15

**Dandelion.**

	Lb.	Oz.
<i>Improved Broad Leaved French</i> .....		\$0.50

**Egg Plant.**

<i>Improved New York Purple</i> , large fine quality.....		.50
---	--	-----

**Endive.**

<i>Green Curled</i> , hardiest sort, fine curled.....	\$2.00	.20
<i>Moss Curled</i> , beautifully curled, fine.....	2.00	.20

**Kale, or Borecole.**

<i>Improved Siberian</i> , for fall sowing.....	.60	.08
<i>Dwarf Curled Scotch</i> .....	1.00	.10

**Kohl Rabi (Turnip Rooted Cabbage).**

<i>Early White Vienna</i> .....	2.50	.25
<i>Large Green</i> , best for general use.....	2.00	.20
<i>Purple Vienna</i> .....	2.00	.20

**Leek.**

<i>Large Broad Flag</i> , chiefly used for soups.....	1.50	.15
<i>Monstrous Carentan, or Improved Musselburgh</i> .....	2.00	.20

**Lettuce.**

<i>Early Curled Simpson</i> , fine for forcing or market....	1.50	.15
<i>Black Seeded Simpson</i> , light colored leaves, large heads, stands the heat remarkably well.....	1.50	.15
<i>White Tennis Ball or Boston Market</i> , forms small compact, yellowish green heads, very tender.....	1.50	.15
<i>Bronze Head</i> , very solid and compact.....	1.75	.20
<i>Big Boston</i> , large solid heads.....	1.75	.20
<i>New York</i> , large solid, deep green.....	1.50	.15
<i>Salamander</i> , large summer variety, very tender....	1.50	.15
<i>White Chavigne</i> , large, solid late sort, keeping tender in the warmest weather.....	2.00	.20
<i>Yellow Seeded Butter</i> , a very distinct sort, with large, yellow heads, crisp, tender, and excellent flavor....	1.50	.15
<i>Stone Tennis Ball</i> , forms a close head, hardy.....	1.50	.15
<i>Green Paris Cos</i> .....	1.50	.15

**Melon, Musk.**

<i>French Forcing Varieties</i> , 10c. per pkt.		
<i>Banquet</i> , medium size, very prolific.....	.80	.10

	Lb.	Oz.
<i>Chicago Market</i> .....	\$.75	\$0.10
<i>Emerald Gem</i> , very smooth, exquisite flavor.....	.80	.10
<i>Golden Netted Gem</i> , one of the earliest globular shape, flesh light green and fine flavor.....	.75	.10
<i>Hackensack</i> , a variety of the Green Citron, grows to a large size, very productive, and exquisite flavor..	.75	.10
<i>Pineapple</i> , red fleshed, very early.....	.75	.10
<i>Large Casaba, or Persian</i> , delicious flavor.....	.80	.10
<i>Miller's Cream</i> , thick salmon colored flesh,.....	.80	.08
<i>Montreal Nutmeg</i> , almost round and deeply ribbed, flesh very thick and of the finest flavor.....	.80	.10
<i>Surprise</i> , thin cream colored skin, flesh salmon, thick, quite early and productive.....	.75	.10
<i>Osage</i> , yellow flesh, early.....	.80	.10
<i>White Japan</i> , very early, flesh creamy white.....	.80	.10

### **Melon, Water.**

<i>Vick's Early</i> .....	.75	.08
<i>Black Spanish</i> , round, dark green, very sweet.....	.75	.08
<i>Cuban Queen</i> , beautifully striped sort, the most solid variety grown .....	.75	.08
<i>Dixie</i> , very large and solid.....	.80	.08
<i>Green and Gold</i> , very large and early, thin rind and delicious flavor .....	.75	.08
<i>Hungarian Honey</i> , very early.....	.80	.08
<i>Mountain Sweet</i> , oval-shaped, early and sweet.....	.70	.08
<i>Seminole</i> , extra large, finest quality.....	.80	.08
<i>White Seed Ice Cream or Peerless</i> , medium size, round- ish, flesh scarlet and delicious flavor.....	.80	.08
<i>Citron</i> , used for preserves.....	.80	.08

### **Mustard.**

<i>White London</i> , best for salads.....	.40	.05
--	-----	-----

### **Nasturtium, or Indian Cress.**

<i>Dwarf</i> , per $\frac{1}{4}$ lb. 40c.....	1.50	.15
<i>Tall, or Running</i> , per $\frac{1}{4}$ lb. 40c.....	1.50	.15

### **Okra, or Gumbo.**

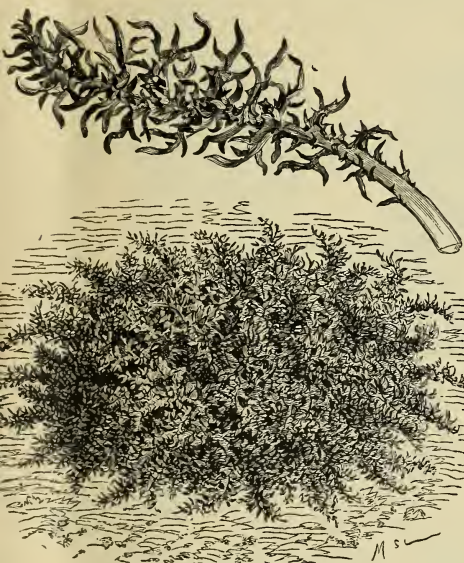
<i>Long Pod</i> , early and productive.....	.80	.10
<i>White Velvet</i> , round smooth pods, of large size and a creamy white color.....	.80	.10



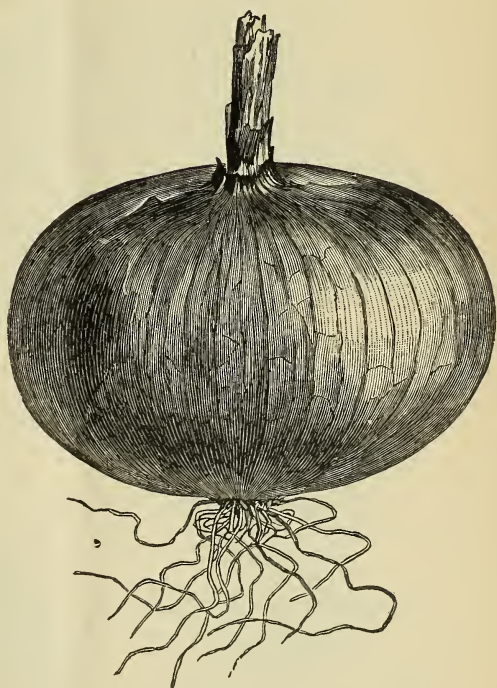
Curled Parsley.



Celeriac.



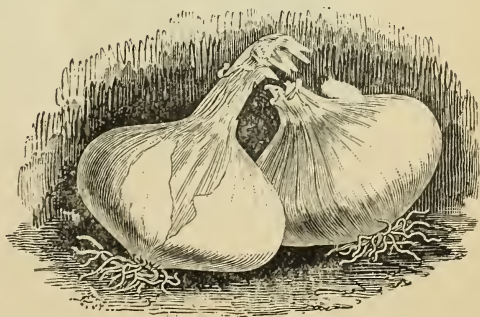
Large Leaved Dandelion.



Globe Danvers Onion.



Large Leaved Spinach.



White Pearl Onion.

**Onion.**

	Lb.	Oz.
<i>Red, Large Flat Wethersfield</i> .....	\$1.25	\$0.12
“ <i>Southport Red Globe</i> .....	1.50	.15
<i>White Pearl, small clear white, very early</i> .....	2.50	.25
“ <i>Portugal, smooth and solid</i> .....	2.00	.20
“ <i>Large Globe, best keeping white sort</i> .....	2.50	.25
<i>Yellow Prizetaker, or Spanish King. If sown early and transplanted it produces enormous flat roots of the most tender flavor</i> .....	2.50	.25
<i>Yellow Globe Danvers, heavy cropper, best for general use</i> .....	1.25	.12
<i>Yellow Southport Globe, very large and solid</i> .....	1.50	.15

**Parsley.**

<i>Extra Moss Curled, beautifully fringed, delicate color, an extra fine stock</i> .....	1.00	.10
--	------	-----

**Parsnip.**

<i>Half-long Guernsey, very smooth white roots</i> .....	.75	.08
--	-----	-----

**Peas.**

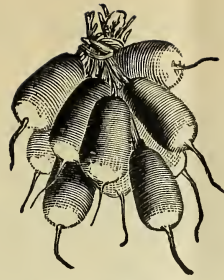
[Wrinkled varieties marked with a \*.]

	Pk.	Qt.
<i>Cleveland's First and Best, very early, prolific and fine quality, 2½ ft., bu. \$3.50</i> .....	1.00	.20
* <i>Nott's Excelsior, very dwarf, producing an abundance of well filled pods, prolific and of unexcelled quality, bu. \$4.75</i> .....	1.50	.25
<i>Cleveland's Alaska, the earliest blue variety, bu. \$3.75</i> .....	1.25	.25
* <i>Bliss' American Wonder, the earliest wrinkled pea, very dwarf and compact habit, 8 in., bu. \$4.75</i> .....	1.50	.25
* <i>Early Premium Gem, or Improved Little Gem, excellent flavor and abundant bearer, most popular sort for garden culture, 1 ft., bu. \$4.75</i> .....	1.50	.25
* <i>McLean's Advancer, standard second early, 2½ ft., bu. \$3.75</i> .....	1.00	.20
* <i>Bliss' Everbearing, a late sort, 2½ ft. high. The habit of growth is very branching</i> .....	1.25	.25
* <i>Heroine, medium early, 2½ ft., a very abundant bearer, and for quality is unsurpassed</i> .....	1.50	.25
* <i>Juno, second early, seeds and pods very large of the finest quality, one of the very best</i> .....	1.50	.25
<i>Carter's Pride of the Market, large round blue pea, great bearer, 3 ft.</i> .....	1.75	.30
* <i>Carter's Stratagem, extra large and fine flavor, 3 ft.</i> .....	1.50	.25





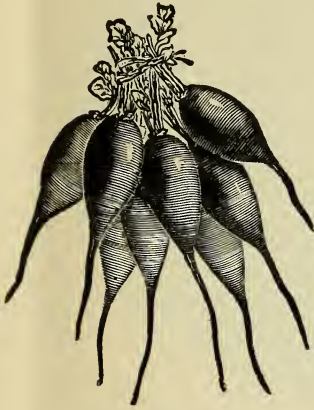
White Tipped Radish.



French Breakfast Radish.



Scarlet Turnip Radish.



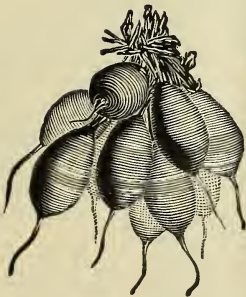
Early Frame Radish.



Moss Curled Parsley.



Rose Chinese Radish.



Olive Shaped Radish.



Red Top Turnip.

	Pk.	Qt.
* <i>Carter's Telephone</i> , abundant bearer, very fine quality, 6 ft. ....	\$1.75	\$0.30
* <i>Champion of England</i> , an old favorite variety, extra fine quality, 4 ft., bu. \$3.00. ....	1.00	.20
* <i>Yorkshire Hero</i> , very large green marrow, quality very fine and abundant cropper, 2½ ft. ....	1.25	.25

### Pepper.

	Lb.	Oz.
<i>Large Bell</i> , or <i>Bull Nose</i> , very thick meated. ....	3.00	.30
<i>Long Cayenne</i> , small conical shape, very fiery. ....	3.00	.30
<i>Red Cherry</i> , or "Bird Pepper," intensely hot. ....		.30
<i>Sweet Mountain</i> , best large sort. ....	3.00	.30
<i>Golden Dawn</i> , very mild. ....	3.00	.30
<i>Red Chili</i> , for pickles. ....		.30

### Pumpkin.

<i>Large Cheese</i> , best for cooking purposes. ....	.60	.08
<i>Etampes Mammoth</i> , grows to immense size. ....	1.50	.15
<i>Connecticut Field</i> , for field culture. ....	.40	.05
<i>Tennessee Sweet Potato</i> , very thick, yellow flesh. ....	.75	.08

### Radish.

#### ALL FINEST FRENCH SEED.

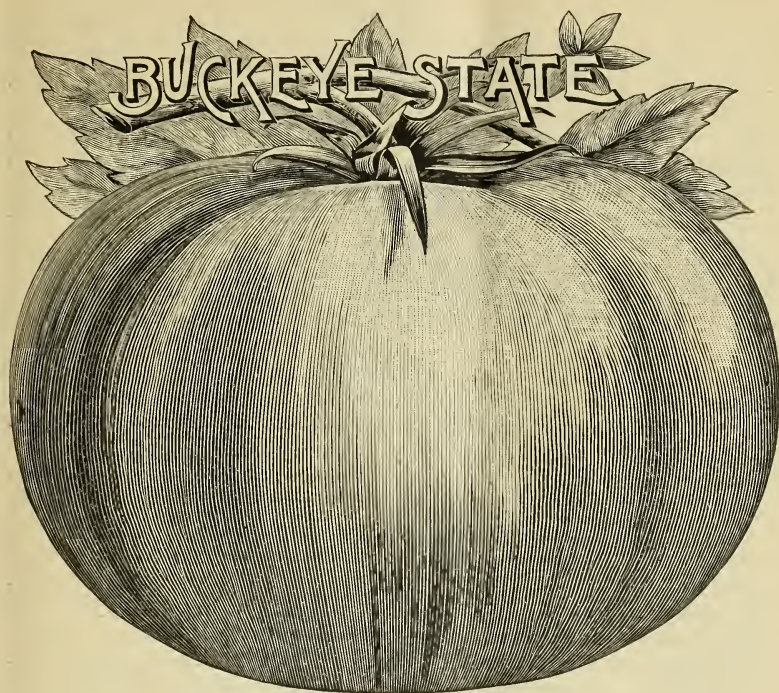
<i>Wood's Early Frame</i> , best for forcing. ....	.60	.08
<i>Turnip, Early Scarlet</i> , small with short top. ....	.75	.10
" <i>Early Deep Scarlet</i> , forcing. ....	.80	.10
" <i>Gray Summer</i> ....	.75	.10
" <i>White Summer</i> ....	.75	.10
<i>Olive Shaped, Early Deep Scarlet</i> . ....	.75	.10
" <i>Scarlet White Tip</i> (French Breakfast)..	.75	.10
<i>Long Scarlet, Short Top</i> , standard sort. ....	.60	.08
<i>Winter Spanish, Round Black</i> . ....	.80	.10
"    " <i>Large White</i> ....	.80	.10
"    " <i>Rose Chinese</i> ....	.80	.10

### Salsify, or Vegetable Oyster.

<i>Long White</i> ....	1.25	.15
<i>Sandwich Island Mammoth</i> , large roots. ....	1.50	.15

### Spinach.

<i>Improved New, Very Large and Crumpled Leaved.</i> The leaves are very large and thick, of a light green color and very fine quality. ....	.25	.05
---	-----	-----



**Squash.**

	Lb.	Oz.
<i>Early Yellow Bush Scallop</i> , very early.....	\$0.60	\$0.08
<i>Early Bush Crookneck</i> , best for general use.....	.75	.08
<i>Giant Summer Crookneck</i> .....	.75	.08
<i>Boston Marrow</i> , light yellow, standard winter sort....	.80	.10
<i>Hubbard</i> , flesh firm, dry and very sweet.....	.80	.10
<i>Prolific Marrow</i> , deep orange colored flesh, early, fine grained and rich flavored.....	.80	.10
<i>Faxon</i> , medium size, very early and prolific.....	.75	.08
<i>Perfect Gem</i> , small round fruit, creamy white color, with thin smooth skin; the flesh is fine grained....	.60	.08
<i>Winter Crookneck</i> , good keeping sort.....	.60	.08

**Tomato.**

<i>Acme</i> , medium size, perfectly smooth and regular, flesh very solid, color dark red, tinged.....	2.50	.25
<i>Atlantic Prize</i> , one of the very earliest, fruit large, smooth and solid.....	2.50	.25
<i>Golden Queen</i> , very solid and prolific, fruit deep yellow color.....	2.50	.25
<i>Livingston's Beauty</i> , deep glossy crimson, large and smooth, thick skin, fine shape.....	2.50	.25
<i>Livingston's Favorite</i> , large, perfect shape.....	2.50	.25
<i>Livingston's Stone</i> , solid, firm fleshed; an excellent keeping variety.....	2.50	.25
<i>Livingston's Aristocrat</i> , dwarf, compact habit of growth, with perfectly round, smooth, solid fruit....		.30
<i>Livingston's Buckeye State</i> , the heaviest variety in cultivation, very large, smooth and solid.....		.30
<i>Fordhook Early</i> , extra early, medium size.....		.30
<i>Matchless</i> , very large, brilliant red.....		.30
<i>Lorillard</i> , smooth, solid and productive.....		.30
<i>Waldorf</i> , perfect shape, very smooth and solid.....		.30
<i>Strawberry</i> , or <i>Winter Cherry</i> ( <i>Physalis</i> ), pkt. 10c....		.40
<i>Yellow Plum</i> , small fruit, used for canning.....		.30

**Turnip.**

<i>Early White Dutch</i> , flat, very early.....	.50	.05
<i>Red Top Strap Leaf</i> .....	.50	.05
<i>White Egg</i> , oval shaped, with very smooth skin, flesh firm and very clear white.....	.50	.05
<i>Long Cow Horn</i> , good size, productive.....	.50	.05
<i>White Swedish or French</i> , very large, late keeping sort, solid flesh.....	.50	.05
<i>Green Top Aberdeen</i> , excellent fall sort.....	.50	.05
<i>Golden Ball</i> , very deep color, fine quality.....	.50	.05
<i>Laing's Improved Swedish</i> , the best of the "Ruta Baga" varieties; purple top, very handsome smooth roots, and of excellent quality.....	.50	.05

## SWEET HERBS, ETC.

*Packages, 5 Cents.*

<i>Anise</i> (Pimpinella Anisa).....	\$0.10
<i>Caraway</i> (Carum carui).....	.10
<i>Dill</i> (Anethum graveolens).....	.10
<i>Fennel Sweet</i> (Anethum Fœniculum).....	.10
<i>Lavender</i> (Lavandula spicata).....	.25
<i>Marjoram Sweet</i> (Origanum marjorana).....	.25
<i>Rosemary</i> (Rosmarinus officinalis) .....	.15
<i>Sage</i> (Salvia officinalis).....	.25
<i>Summer Savory</i> (Satureia hortensis).....	.20
<i>Thyme Broad Leaved</i> (Thymus vulgaris).....	.40
<i>Wormwood</i> (Artemisia Absinthium).....	.40

## Miscellaneous Seeds, Etc.

<i>Bird Seed, Canary</i> .....	15c. per qt.
“ Rape .....	15c. “
“ Mixed .....	15c. “
“ Lettuce .....	50c. per lb.
<i>Celery Seed, for flavoring</i> .....	40c. “
<i>Caraway Seed,</i> “ .....	50c. “
<i>Coriander Seed,</i> “ .....	50c. “
<i>Clover, White Dutch</i> .....	40c. “
<i>Grass Seed, Red Top</i> .....	per bu., market price.
“ <i>Kentucky Blue</i> .....	“ “
“ <i>Mixed, for lawns</i> ... .	.20c. qt., 2 qts. 35c., 4 qts. 60c., pk.
\$1.00, bu. \$3.00, our own special mixture of strictly clean seed.	
<i>Onion Sets</i> Potato.....	per bu., market price.
“ Red Top .....	“ “
“ White Portugal .....	“ “
“ Yellow Danvers .....	“ “

## VEGETABLE PLANTS.

	100.	1000.
<i>Asparagus, Conover's Colossal, 2 years old</i> .....	\$0.80	\$6.00
<i>Cabbage Plants, early and late, per doz.</i> 5c.....	.25	2.00
<i>Cauliflower, Early Snowball, per doz.</i> 15c.....	1.00	7.50
<i>Celery, open ground by July 10th</i> .....	.50	4.00
<i>Egg Plants, pot grown, per doz.</i> 50c.....	4.00	

	100.	1000.
<i>Lettuce</i> , Early Simpson, per doz. 5c.....	\$0.25	\$2.00
<i>Peppers</i> , in varieties, per doz. 15c.....	1.00	7.50
<i>Parsley</i> , Extra Curled, per doz. 15c.....	1.00	7.50
<i>Tomatoes</i> , transplanted, " 20c.....	1.25	8.00
" pot grown " 50c.....	4.00	
" extra large plants, per doz. \$2.00.		
" from seed bed.....	.50	

## Floral Requisites, Etc.

- Garden Trowels*, 18c. to 25c. each.  
*Grafting Wax*, 35c. per lb., 10c. per ¼ lb.  
*Knives, Budding*, 80c. to \$1.00 each.  
 " *Propagating*, 60c., 75c. and 85c., each.  
*Pot Labels* (painted), 4½ in., 15c. per 100, \$1.25 per 1,000.  
 " " 3½ in., 10c. " 80c. "  
 " " 6 in., 30c. " \$2.00 "  
*Raphia*, for tying plants, 60c. per lb.  
*Rustic Hanging Baskets*, with deep bowls, 7 in. diameter, 70c., 9 in. 90c., 10 in. \$1.00, 11 in. \$1.20, 12 in. \$1.35 each.  
*Shears, Pruning*, 50c., 55c. and 75c. per pair.  
*Tin Foil*, per lb. 30c., per oz. 5c.  
 " Purple, for violets, per lb. 80c., per oz. 10c.  
*Tooth Picks*, for stemming, per box of 2,500, 10c.  
*Wire, Fine*, for stemming, per lb. 40c., per oz. 10c.  
 " Camellia, per lb. 30c.  
 " Forms for flowers, in all designs and sizes.  
*Flower Pots*, in all sizes.  
*Sphagnum, or Packing Moss*, \$1.00 per bushel.  
*Potting Soil*, 75c. per bushel.

## FERTILIZERS.

- Compressed Sheep Manure*, in 2 lb. pkgs., 25c.  
*Plantene*, per pkg., 15c.  
*Perfection Bone*, per pkg., 12c.  
*Fertilene*, per bottle, 25c.  
*Bowker's Lawn Fertilizer*, for Lawns, Flower Beds, Vegetables, and "every green thing that grows,"  
 in 5 lb. bags, 25c.  
 " 10 " " 50c.  
 " 25 " " \$1.00.  
 " 50 " " 1.50.  
 " 100 " " (original packages) \$2.00 per bag.

## General List of Flower Seeds.

## ALPHABETICALLY ARRANGED.

Any person enclosing \$1.00 may SELECT FLOWER SEEDS IN PAPERS ONLY to the amount of \$1.25, which will be sent free by mail.

*Mixed Seeds for Wild Flower Garden*, comprising over one hundred varieties of annuals. This mixture is specially designed to cover waste places, or for growing in any situation to produce a brilliant effect with little cultivation. Per pkt. 5c., per doz. pkts. 50c.

	Pkt.
<i>Abronia umbellata</i> , pretty creeping annual with lilac flowers...	\$0.05
<i>Adonis autumnalis</i> (Flos.), bright crimson flowers, showy.....	.05
<i>Ageratum</i> , <i>Mixed Colors</i> , per oz. 40c.....	.05
<i>Agrostemma coronaria</i> , Rose Campion.....	.05
<i>Alyssum Sweet</i> , finest white flowering annual, per oz. 25c.....	.05
“ <i>Saxatile</i> , hardy yellow.....	.10
<i>Amaranthus</i> , <i>Mixed Varieties</i> .....	.10
<i>Ampelopsis Veitchii</i> , beautiful hardy creeper, per oz. 30c.....	.10
<i>Antirrhinum</i> , fine mixed (Snapdragon), per oz. 40c.....	.05
“ <i>Brilliant Scarlet</i> , a very distinct new shade of color, the most effective of the Snapdragons..	.10
“ <i>Very Dwarf Double</i> , a beautifully colored double flowered variety that comes true from seed...	.15
<i>Aquilegia</i> , <i>Fine Mixed Double</i> (Columbine), a beautiful class of hardy perennials of easy culture.....	.05
“ <i>cærulea</i> , mixed, large blue and white.....	.10
“ <i>chrysantha</i> , large clear yellow.....	.10
“ <i>nana alba</i> , dwarf white.....	.10
<i>Aralia Sieboldi</i> .....	.15
<i>Aster</i> , <i>Chrysanthemum flowered</i> , mixed.....	.10
“ “ “ pure white .....	.10
“ <i>Comet</i> , mixed, long drooping petals, very distinct.....	.10
“ <i>French Crown</i> , mixed, finely formed flowers, center white, with brilliant margin.....	.10
“ <i>Quilled Double German</i> , mixed, per oz. 50c.....	.05
“ “ “ <i>Crimson</i> .....	.05
“ “ “ <i>Purple</i> .....	.05
“ “ “ <i>Rose</i> .....	.05
“ <i>Pæony flowered</i> , mixed.....	.10
“ <i>Queen of the Market</i> , mixed, very regular double flowers, particularly desirable for cutting purposes, very early blooming, per oz. \$1.50.....	.10

	Pkt.
<i>Aster, Queen of the Market, Blue</i> .....	\$0.10
“ “ “ “ <i>Crimson</i> .....	.10
“ “ “ “ <i>Pink</i> .....	.10
“ “ “ “ <i>Pure White</i> .....	.10
“ <i>Truffaut's Pæony Perfection</i> , mixed.....	.10
“ “ “ “ <i>white</i> .....	.10
“ <i>Mignon Dwarf White</i> , very fine for pot culture or forcing .....	.10
“ <i>Semple's Branching</i> , mixed.....	.10
“ <i>Victoria</i> , mixed, very large perfectly imbricated flowers .....	.10
<i>Balloon Vine</i> , ornamental climber with curious pods.....	.05
<i>Balsam Apple</i> (see <i>Momordica</i> ).	
“ <i>Mixed Double</i> , per oz. 60c.....	.05
“ <i>Fine Double White</i> , per oz. \$1.00.....	.10
<i>Begonia, Tuberos rooted</i> , fine mixed hybrids, saved from a superb collection .....	.25
<i>Browallia elata</i> , bright blue with white eye, very useful.....	.10
<i>Calceolaria hybrida</i> , very fine, selected.....	.50
<i>Calendula officinalis</i> (Pot Marigold), mixed double, oz. 30c....	.05
“ <i>Meteor</i> , beautifully imbricated, double flowers, pale lemon color with deep orange stripe.....	.05
“ <i>Double Bright Yellow</i> .....	.05
“ <i>Double White</i> .....	.05
<i>Calliopsis</i> , mixed showy free flowering annual of very bright colors, excellent for borders, per oz. 30c.....	.05
<i>Campanula calycanthema</i> ( <i>Cup and Saucer Canterbury Bell</i> ), mixed colors.....	.10
<i>Canary Bird Flower</i> ( <i>Tropæolum</i> ), fine ornamental climber with bright yellow fringed flowers and delicate foliage....	.10
<i>Candytuft, Lilac or Rose</i> .....	.05
“ <i>Sweet Scented</i> , white, finely cut foliage.....	.05
“ <i>White Rocket</i> , large flower, oz. 25c.....	.05
“ <i>Mixed Colors</i> , per oz. 20c.....	.05
“ <i>Hybrid, Dwarf Mixed</i> , large clusters of flowers, compact habit .....	.10
<i>Canna</i> , fine mixed sorts, large ornamental leaved plants, of easy culture, per oz. 20c.....	.05
“ <i>Crozy's New Hybrids</i> , from named sorts.....	.10
<i>Canterbury Bells</i> ( <i>Campanula</i> ), mixed double, hardy biennial, 10c.; mixed single.....	.05
<i>Carnation, Marguerite</i> , if sown in the spring, will flower in July and continue through the season; the flowers are large, double and fragrant.....	.10
“ <i>New Giant Marguerite</i> , a new, large flowering strain, and produces very double sweet scented flowers during the summer and autumn.....	.15
“ <i>Mixed German</i> , hardy perennial.....	.10

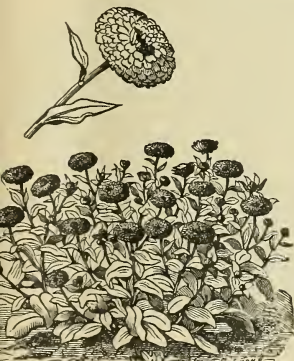




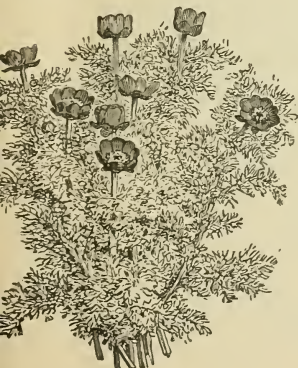
Victoria Aster.



Quilled Aster.



Calendula Officinalis.



Adonis Autumnalis.



Truffaut's Perfection Aster.

	Pk.
<i>Carnation, Finest Selected Double German</i> .....	\$0.25
<i>Catananche cærulea</i> , clear blue.....	.05
<i>Celosia cristata</i> (Dwarf Cockcomb), mixed.....	.10
“ <i>pyramidalis</i> (Feathered Cockcomb), mixed.....	.10
“ <i>Ostrich Feather, Crimson</i> .....	.10
“ “ “ <i>Yellow</i> .....	.10
<i>Centaurea cyanus</i> , dark blue, very fine annual for cut flowers, blossoms all summer, oz. 30c.....	.05
“ “ mixed (Corn Flower), (Ragged Sailor)....	.05
“ <i>macrocephala</i> , very large yellow flowers.....	.05
“ <i>candidissima</i> , white leaves for ribbon beds.....	.10
“ <i>gymnocarpa</i> , silvery foliage.....	.10
<i>Chrysanthemum coronarium</i> , mixed double, strong growing, showy annual, very effective for borders, per oz. 30c.....	.05
“ <i>tricolor</i> , mixed (Painted Daisy), very showy brilliant colored flowers.....	.10
<i>Cineraria hybrida</i> , from selected flowers.....	.50
“ <i>maritima</i> (Dusty Miller), white foliage.....	.10
<i>Clarkia elegans</i> , mixed double dwarf growing attractive annual, of the easiest culture, oz. 30c.....	.05
<i>Cobæa scandens</i> , rapid growing climber, bearing a profusion of large purple bell-shaped flowers.....	.10
<i>Coix Lachrymæ</i> (Job's Tears). Ornamental grass.....	.05
<i>Cockscomb</i> , see <i>Celosia</i> .....	.10
<i>Coleus</i> , extra fine hybrids.....	.25
<i>Convolvulus minor</i> , mixed, creeping annual, one of the finest plants for borders, continual bloomer.....	.05
“ See <i>Ipomæa</i> .	
“ <i>major</i> , mixed colors (Morning Glory), oz. 15c....	.05
<i>Cosmos hybridus</i> , a fine genus that attains a height of nearly five feet and in the fall months is literally covered with flowers closely resembling single Dahlias....	.10
“ <i>Large Pure White</i> .....	.10
“ <i>Large Pink</i> .....	.10
“ <i>New Giant Early Flowering</i> , of immense size and pro- duced in great diversity of form and coloring.....	.15
“ <i>Tints of Dawn</i> , pure white, shaded with pink, very large flowers.....	.15
<i>Corn Flower</i> , see <i>Centaurea</i> .	
<i>Cyclamen Persicum grandiflorum</i> , from the very finest varieties.	.25
<i>Cypress Vine</i> , mixed, beautiful twining vine, with delicate fern- like foliage, per oz. 40c.....	.05
<i>Dahlia</i> , finest mixed single.....	.10



Petunia Superbissima.



Godetia.



Hybrid Dwarf Candytuft.



Dwarf Coxcomb.



Hyacinth Flowered Larkspur.

	Pkt.
<i>Dahlia</i> , finest double, from selected named varieties.....	\$0.10
<i>Datura</i> , <i>Golden Queen</i> ; the flowers are of gigantic size, very double and produced in great profusion, color brilliant yellow, very showy and effective.....	.10
<i>Delphinium grandiflorum</i> , mixed (Perennial Larkspur), very showy, hardy and profuse blooming.....	.05
“ <i>hybridum</i> , double dark blue.....	.10
<i>Daisy</i> , mixed double English.....	.25
<i>Dictamnus Fraxinella</i> , free blooming hardy perennial, with showy, fragrant flowers.....	.05
<i>Dianthus Margaritæ</i> , <i>Marguerite Carnation</i> .....	.10
<i>Doronicum Caucasium</i> , fine perennial.....	.10
<i>Dracæna indivisa</i> , ornamental greenhouse plant, also useful for culture in vases and summer decorations.....	.10
<i>Eschscholtzia</i> (California Poppy), mixed, per oz. 35c.....	.05
“ “ <i>The Golden West</i> ”; the flowers are over 4 in. in diameter, the color is light yellow blotched with orange. Very early and perpetual blooming.....	.25
<i>Euphorbia variegata</i> (Snow on the Mountain), pretty variegated leaves, useful for trimming bouquets.....	.05
<i>Everlasting Acroclinium</i> , mixed.....	.05
“ <i>Helichrysum</i> , mixed double (Straw flowers).....	.05
“ <i>Globe Amaranth</i> , <i>Mixed</i> (Bachelor’s Button).....	.05
“ <i>Rhodanthe</i> , mixed, very pretty graceful variety, excellent for winter bouquets.....	.10
<i>Forget-me-not</i> , see <i>Myosotis</i> .	
<i>Foxglove</i> ( <i>Digitalis</i> ), mixed, an extremely showy biennial....	.05
<i>Gaillardia picta</i> , very showy brilliant flowers, oz. 50c.....	.05
“ “ <i>Lorensana</i> , fine double.....	.10
“ <i>Perennial Hybrids</i> . This class of hardy plants is one of the showiest, ever-blooming herbaceous plants.....	.10
“ <i>grandiflora compacta</i> , a new compact type of hardy <i>Gaillardias</i> that will prove a great acquisition for the herbaceous border; the colors are golden yellow beautifully banded with crimson and orange.....	.25
<i>Geranium Mixed Zonale</i> , from finest sorts.....	.15
<i>Gilia</i> , mixed, dwarf growing, free blooming, neat and pretty, excellent for edging, per oz. 25c.....	.05
<i>Gladiolus Gandivensis</i> , finest mixed hybrids.....	.15
<i>Gloxinia</i> , from very fine named varieties.....	.50
<i>Godetia</i> , mixed, a very profuse blooming plant, with large, showy flowers, pleasing colors and compact habit.....	.05
<i>Gourds</i> , <i>Ornamental</i> , in large variety, mixed.....	.05
<i>Grevillea robusta</i> , showy greenhouse plant.....	.15
<i>Gypsophila paniculata</i> , very free blooming, of great utility for loose bouquets, color pure white.....	.05
<i>Heliotrope</i> , fine mixed.....	.10

	Pkt.
<i>Helianthus globulus fistulosus</i> (Sunflower), very large globular flowers of a rich, bright saffron color.....	\$.05
“ <i>Californicus</i> , fl. pl., very double orange color.....	.05
“ <i>Double</i> , sulphur yellow.....	.05
“ <i>Dwarf</i> , variegated leaved.....	.05
“ <i>Globe of Gold</i> , a new double dwarf variety about 3½ feet high, flowers densely double, of the deepest golden yellow, very profuse.....	.10
<i>Hibiscus</i> , <i>Crimson Eye</i> .....	.10
<i>Hollyhock</i> , <i>Finest Mixed Double</i> , an extra fine strain, our own growth.....	.10
<i>Hyacinth Beans</i> , rapid growing climber, large showy clusters of flowers, mixed.....	.05
<i>Ipomæa coccinea</i> (Star Morning Glory), bright scarlet.....	.05
“ <i>grandiflora</i> (Moonflower), large, pure white fragrant flowers.....	.10
“ <i>Setosa</i> (Brazilian Morning Glory), beautiful rose-colored flowers, with very large, broad leaves, strong, rapid climber.....	.10
“ <i>Imperial Japanese</i> , a new class of Morning Glory; the flowers are of exquisite beauty of form and coloring and of enormous size.....	.10
“ <i>Northern Light</i> , large pink flowers, over 2 inches diameter, a very early blooming variety.....	.10
“ <i>Major</i> , mixed (Morning Glory).....	.05
<i>Jockey Club</i> , showy, free blooming annual, with long tubed, very fragrant flowers, mixed colors.....	.05
<i>Lantana Mixed</i> , from fine varieties.....	.10
<i>Larkspur</i> , <i>Double Dwarf Rocket</i> , mixed, per oz. 25c.....	.05
“ <i>Double Hyacinth Flowered</i> , extremely showy, producing large spikes of brilliant flowers.....	.05
“ <i>Perennial</i> , see <i>Delphinium</i> .	
<i>Lathyrus latifolius</i> (Everlasting Pea), hardy perennial of easy culture, flowers rosy purple.....	.05
“ <i>albus</i> , white.....	.05
<i>Lobelia</i> , <i>Carter's Cobalt Blue</i> , beautiful color.....	.10
“ <i>Crystal Palace Gem</i> , bright blue, clear white eye.....	.10
<i>Lophospermum scandens</i> , rapid climber, deep pink flowers.....	.10
<i>Lychnis Haageana grandiflora</i> , a beautiful herbaceous plant....	.10
<i>Marigold</i> , <i>Double African</i> , mixed colors, per oz. 30c.....	.05
“ <i>Double Dwarf French</i> , deep maroon, per oz. 30c.....	.05
“ <i>Compact Gold Striped</i> , grows about one foot high, forming a compact bush, completely covered with small double flowers, per oz. 50c.....	.10
<i>Marvel of Peru</i> (Four O'clocks), fine mixed colors.....	.05
<i>Maurandya Barclayana</i> , mixed, rapid growing climbing vine, profuse blooming, very pretty.....	.10

	Pkt.
<i>Mignonette, Large Flowering Sweet</i> , a well known annual indis- pensable in every garden, per oz. 15c., $\frac{1}{4}$ lb. 50c., 1 lb. \$1.50.....	\$0.05
“ <i>Machet</i> , dwarf and vigorous, with broad spikes, deliciously scented red flowers, distinct.....	.10
“ <i>Elois Francois</i> , very long spikes, useful variety for forcing under grass.....	.10
“ <i>Allens Defiance</i> , the special large type that is grown for specimen spikes during the winter.....	.25
<i>Mimulus moschatus</i> (Musk Plant).....	.10
“ <i>cupreus hybridus</i> (Monkey Flower).....	.10
<i>Mormodica Balsamina</i> (Balsam Apple), very showy rapid grow- ing climber, with peculiarly shaped fruit.....	.05
<i>Morning Glory</i> , see <i>Convolvulus</i> , also <i>Ipomæa</i> .....	.05
<i>Myosotis Alpestris</i> (Blue Forget-me-not).....	.10
<i>Nasturtium, Tom Thumb, Mixed</i> , for hanging baskets or gen- eral bedding purposes; these are unsurpassed for general usefulness; per oz. 15c., per $\frac{1}{4}$ lb. 40c., per lb. \$1.50.....	.05
“ <i>Bronze colored</i> .....	.05
“ <i>Crimson</i> .....	.05
“ <i>Empress of India</i> , brilliant glowing crimson, very profuse blooming, compact habit.....	.05
“ <i>Golden King</i> , deep pure yellow.....	.05
“ <i>Pearl</i> , sulphur white.....	.05
“ <i>Rose</i> , very peculiar shade.....	.05
“ <i>Scarlet</i> .....	.05
“ <i>Lobbianum</i> (Ivy Nasturtium), small fringed bril- liant colored flowers, drooping habit.....	.10
“ Tall or Running, mixed, per oz. 15c., per $\frac{1}{4}$ lb. 40c., per lb. \$1.50.....	.05
“ <i>Mme. Gunther hybrids</i> , containing many novel colors, strong growers and very free blooming.	.10
<i>Nemophila insignis</i> , very pretty dwarf annual, flowers deep blue and white, per oz. 20c.....	.05
<i>Nicotiana affinis</i> , a variety of tobacco with long-tubed sweet scented flowers, showy border plant.....	.10
<i>Nigella Damascena</i> (Love in a Mist), double, dark blue.....	.05
<i>Oxyura Chrysanthemoides</i> , yellow, very showy.....	.10
<i>Pansy, large flowered</i> , black.....	.15
“ “ blue.....	.15
“ “ white.....	.15
“ <i>bright yellow</i> .....	.15
“ <i>Trimardeau</i> , mixed colors, extra large broad flowers, distinctly blotched and spotted.....	.25
“ <i>Fine Mixed</i> , per oz. \$1.50.....	.10

	Pkt.
<i>Pansy, Extra Large Flowering</i> , saved from an extra fine collection of selected varieties, oz. \$4.00.....	\$0.25
“ <i>Bugnot’s Mammoth</i> , a superb strain, peculiarly blotched and stained .....	.50
<i>Papaver bracteatum</i> , brilliant red (Perennial Poppy).....	.10
“ <i>Orientele</i> , deep scarlet.....	.10
“ <i>nudicaule</i> (Iceland Poppy), an extremely showy genus, bearing a profusion of very bright single flowers, remarkable lasting quality.....	.10
“ <i>pavoninum</i> , <i>Peacock Poppy</i> , brilliant scarlet with glossy black ring, and cherry carmine center.....	.10
<i>Pctunia, Fine Mixed</i> , per oz. \$1.00.....	.05
“ <i>Finest Striped and Blotched</i> , oz. \$2.00.....	.15
“ <i>New Large Flowered</i> , finest mixed.....	.25
“ <i>Ruffled Giant</i> , extra large flowers, fluted and fringed, colors peculiarly striped and mottled.....	.50
“ <i>Large White</i> , very free blooming, excellent for bedding.....	.05
<i>Phlox Drummondii, Finest Mixed</i> , per oz. 60c.....	.05
“ <i>grandiflora, Large Flowering</i> , mixed.....	.10
“ “ <i>Cardinal</i> , scarlet .....	.10
“ “ <i>Pure White</i> .....	.10
“ “ <i>Rose</i> , white center.....	.10
“ <i>cuspidata</i> (Star Phlox), peculiar pointed petals, giving the flower a beautiful star-like appearance.....	.10
“ <i>Perennial</i> , saved from finest named varieties.....	.10
<i>Pink, China, Mixed Double</i> , per oz. 40c.....	.05
“ <i>Diadem, Mixed Double</i> , dwarf, compact habit, various shades of rose, maroon and purple.....	.10
“ <i>Japan, Mixed Double</i> , very rich colors, oz. \$1.00.....	.10
“ “ “ <i>Fringed</i> , beautifully fringed and lacerated flowers, showy, oz. 75c.....	.10
“ <i>Double Garden</i> , beautiful hardy perennial.....	.15
<i>Polyanthus</i> , mixed hardy perennial.....	.10
<i>Poppy, Double French</i> , mixed, per oz. 30c.....	.05
“ <i>Large Double German</i> , mixed, per oz. 30c.....	.05
“ <i>Large Double Pink</i> .....	.05
“ <i>Large Double Scarlet</i> .....	.05
“ <i>Large Double White</i> .....	.05
“ <i>Single Mixed</i> , very showy, oz. 30c.....	.05
“ <i>Single Scarlet (Papaver Rhæas)</i> , Corn Poppy.....	.05
“ <i>Mikado</i> , white, striped with crimson, very double fringed flowers .....	.10
“ <i>Shirley</i> , an elegant semi-double strain, very bright glossy petals, mixed colors.....	.10
“ <i>Perennial</i> , see <i>Papaver</i> .	
<i>Portulaca grandiflora</i> , fine mixed, per oz. 50c.....	.05
“ “ <i>Finest Mixed Double</i> .....	.10

	Pkt.
<i>Primula Sinensis fimbriata</i> , extra fine mixed fringed. (Chinese Primrose) . . . . .	\$0.50
“ <i>Sinensis alba magnifica</i> , large white. . . . .	.50
“ “ Bright Rose . . . . .	.50
“ “ Deep Crimson . . . . .	.50
“ “ <i>filicifolia</i> , mixed. . . . .	.50
“ <i>obconica</i> . . . . .	.25
<i>Pyrethrum Golden Feather</i> , fine golden-leaved plant, excellent for ribbon work. . . . .	.10
“ <i>hybridum</i> , double mixed. . . . .	.10
<i>Reseda</i> , see <i>Mignonette</i> .	
<i>Ricinus</i> (Castor Beans), mixed, very large-leaved, strong growing ornamental plants, per oz. 20c. . . . .	.05
“ <i>Zanzibariensis</i> , mixed varieties. . . . .	.10
<i>Salpiglossis, Large Flowering</i> , mixed, free blooming annual with peculiarly colored penciled flowers, per oz. 60c. . . . .	.05
<i>Salvia splendens, Scarlet Sage</i> . . . . .	.10
<i>Scabiosa, Mixed Double German</i> , strong growing border plant continuing in bloom until frost, per oz. 40c. . . . .	.05
<i>Schizanthus</i> , mixed, beautiful annual, profuse blooming and very pleasing colors, per oz. 25c. . . . .	.05
<i>Sensitive Plant (Mimosa pudica)</i> . . . . .	.05
<i>Smilax (Myrsiphyllum)</i> , one of the finest twining vines. . . . .	.10
<i>Stock (Gilliflower), Cut and come again</i> , free blooming, white. . . . .	.10
“ <i>Mixed, Ten Weeks</i> , per oz. 75c. . . . .	.05
“ <i>Dwarf Double Ten Weeks</i> , finest mixed. . . . .	.10
“ “ “ “ <i>Crimson</i> . . . . .	.10
“ “ “ “ <i>Rose</i> . . . . .	.10
“ “ “ “ <i>White</i> . . . . .	.10
<i>Sunflower</i> , see <i>Helianthus</i> .	
<i>Sweet Peas (Lathyrus odoratus)</i> . To the culture of this favorite flower we devote special attention, thoroughly testing the new varieties as they are sent out, and can confidently recommend the seeds we offer as being strictly true to name and color. To insure success they should be sown very early in the spring and at least six inches deep. The soil should be thoroughly prepared and very rich.	
“ In fine mixed varieties. Per lb. 50c., per $\frac{1}{4}$ lb. 15c., per oz. 8c. . . . .	.05
“ In extra fine mixture, including Eckford's newest hybrids; this mixture we put up ourselves from fifty of the finest named sorts. Per lb. 75c., $\frac{1}{2}$ lb. 40c., $\frac{1}{4}$ lb. 25c., oz. 10c. . . . .	.05
“ <i>Adonis</i> , deep crimson rose, per oz. 10c. . . . .	.05
“ <i>Alba magnifica</i> , large pure white, per oz. 10c. . . . .	.05
“ <i>Apple Blossom</i> , beautifully shaded blush, per oz. 10c. . . . .	.05



	Pkt.
<i>Sweet Peas, Alice Eckford</i> , creamy white, tinted pink.....	\$0.05
“ <i>Aurora</i> , white, flaked bright orange salmon.....	.10
“ <i>Blanche Ferry</i> , deep pink and white, dwarf and very profuse, 1 lb. 75c., ¼ lb. 25c., per oz. 10c.....	.05
“ <i>Boreatton</i> , rich crimson maroon, per oz. 10c.....	.05
“ <i>Cardinal</i> , deep crimson scarlet, per oz. 10c.....	.05
“ <i>Countess of Radnor</i> , beautiful light lavender, large flowers, with long stems, per oz. 10c.....	.05
“ <i>Cupid</i> , new dwarf white, fine for pot culture or borders, per oz. 40c.....	.10
“ <i>Cupid</i> , new dwarf pink.....	.10
“ <i>Delight</i> , white, flushed pale rose, per oz. 10c.....	.05
“ <i>Dorothy Tennant</i> , deep rosy mauve, per oz. 10c.....	.05
“ <i>Duke of Clarence</i> , rich dark claret, per oz. 15c.....	.05
“ <i>Duke of York</i> , rosy pink standard, wings primrose, tinted white, per oz. 15c.....	.05
“ <i>Eliza Eckford</i> , blush, flaked deep rose, per oz. 15c..	.05
“ <i>Emily Eckford</i> , porcelain blue, suffused with reddish mauve, per oz. 20c.....	.05
“ <i>Emily Henderson</i> , splendid pure white, per oz. 10c..	.05
“ <i>Firefly</i> , standards fiery scarlet, with deep crimson wings, per oz. 15c.....	.05
“ <i>Gaiety</i> , white, striped rosy lilac, per oz. 10c.....	.05
“ <i>Grand Blue</i> , deep indigo blue, per oz. 10c.....	.05
“ <i>Her Majesty</i> , beautiful soft rosy pink, extra large flowers, per oz. 15c.....	.05
“ <i>Ignea</i> , fiery crimson scarlet, per oz. 10c.....	.05
“ <i>Indigo King</i> , large dark purple, per oz. 10c.....	.05
“ <i>Lady Beaconsfield</i> , salmon standards, tinted rose, wings pale yellow, per oz. 15c.....	.05
“ <i>Lady Penzance</i> , beautiful bright rose, per oz. 15c...	.05
“ <i>Meteor</i> , bright orange scarlet standards, wings deep pink, per oz. 15c.....	.05
“ <i>Miss Hunt</i> , carmine salmon and pink, per oz. 10c...	.05
“ <i>Mrs. Eckford</i> , white, shaded with primrose, per oz. 10c. ....	.05
“ <i>Mrs. Sankey</i> , extra fine purest white, per oz. 10c...	.05
“ <i>Orange Prince</i> , clear orange pink, per oz. 10c.....	.05
“ <i>Ovid</i> , deep rosy pink, margined blush, per oz. 10c..	.05
“ <i>Primrose</i> , pale primrose yellow, per oz. 10c.....	.05
“ <i>Princess May</i> , beautiful pale lavender, per oz. 10c..	.05
“ <i>Ramona</i> , creamy white, flaked pink.....	.05
“ <i>Red Riding Hood</i> , brilliant red.....	.10
“ <i>Rising Sun</i> , orange, blotched carmine, per oz. 10c..	.05
“ <i>Royal Robe</i> , delicate pink standards, wings soft blush pink, per oz. 15c.....	.05

	Pkt.
<i>Sweet Peas, Senator</i> , chocolate, shaded creamy white, per oz.	
10c. ....	\$0.05
<i>Splendor</i> , large rosy crimson, per oz. 10c.....	.05
<i>Stanley</i> , very large deep maroon, per oz. 15c.....	.05
<i>Venus</i> , salmon buff, shaded rosy pink, per oz. 10c..	.05
<i>Sweet Sultan</i> , mixed, sweet scented, profuse blooming annual very effective for borders.....	.05
<i>Sweet William</i> , fine mixed, hardy perennial, per oz. 30c.....	.05
<i>Thunbergia Mixed</i> , beautiful rapid growing climber, with showy orange and white flowers, per oz. 40c.....	.05
<i>Tropæolum</i> , see <i>Nasturtium</i> .....	.05
<i>Peregrinum</i> , see <i>Canary Bird Flower</i> .....	.10
<i>Verbena hybrida, Fine Mixed</i> , per oz. \$1.00.....	.05
<i>Extra Mixed</i> , per oz. \$3.00.....	.10
<i>Scarlet Defiance</i> .....	.10
<i>White</i> .....	.10
<i>New Dwarf Compact</i> .....	.10
<i>Vinca rosea (Cantharanthus)</i> , ( <i>Madagascar Periwinkle</i> ), mixed colors. This is a very fine greenhouse shrub, excellent for blooming in pots, and one of the finest plants for summer bedding .....	.10
<i>Wallflower</i> , Mixed German, half-hardy perennial.....	.05
<i>Zinnia, Mixed Double</i> , a very fine selection of this favorite flower, brilliant colors, per oz. 60c.....	.05
<i>Large Double Scarlet</i> .....	.10
"    " <i>Striped</i> .....	.10
"    " <i>White</i> .....	.10
"    " <i>Yellow</i> .....	.10
<i>Double Tom Thumb</i> , mixed; the plant is very compact and branching, and the flowers are exceedingly dou- ble, resembling a Pompon Chrysanthemum.....	.10

## General Collection of Plants.

(Not less than six furnished at dozen rates.)

### *Bedding Plants, Alphabetically Arranged.*

	Doz.	Each.
<i>Abutilons</i> (Flowering Maple), in a number of the best named varieties . . . . .	\$2.50	\$0.25
<i>Achyranthes</i> , in six varieties, per 100, \$5.00. . . . .	.75	.08
<i>Ageratum</i> , <i>White Cap</i> , very dwarf, almost white. . . . .	.75	.08
“ <i>Cope’s Gem</i> , grows about six inches high, color deep pure blue, and continuous in blooming . . . . .	.75	.08
<i>Alternantheras</i> , in four varieties, per 100, \$5.00. . . . .	.75	.08
<i>Alyssum</i> , Double White. . . . .	1.50	.15
<i>Anemone Japonica</i> , Whirlwind. . . . .		.25
<i>Anthemis coronaria</i> , fl. pl. (Double Golden Marguerite), a profuse blooming plant. . . . .	2.50	.25
“ <i>tinctoria</i> , bright orange colored flowers, very showy, perfectly hardy. . . . .	1.50	.15
<i>Asclepias curassavica</i> . . . . .		.25
<i>Begonias</i> , Tuberous Rooted, in finest single varieties, large bulbs, started in pots. . . . .	2.50	.25
<i>Bouvardias</i> , in fine named sorts. . . . .	3.00	.30
<i>Calceolaria</i> , <i>Brown Prince</i> , deep maroon. . . . .	1.50	.15
“ <i>aurea floribunda</i> , golden yellow. . . . .	1.50	.15
<i>Catharanthus roseus</i> , in three colors. . . . .	2.50	.25
<i>Chrysanthemum frutescens</i> (Marguerite). . . . .	1.50	.15
<i>Chaenostoma hispida</i> , small star-shaped white flowers, covering at all times the whole plant. . . . .	1.50	.15
<i>Coleus</i> , a very large stock of the best bedding varieties in pots, per 100, \$5.00. . . . .	.75	.08
“ Rooted cuttings, not potted, per 100, \$3.50. . . . .	.50	.05
<i>Cuphea platycentra</i> (Cigar Plant). . . . .	1.00	.10
Daisy, <i>Double English</i> , several colors. . . . .	.75	.08
<i>Feverfew Little Gem</i> , quite dwarf, flowers large, of perfect form and pure white. . . . .	1.00	.10
<i>Forget-me-not</i> , in several colors ( <i>Myosotis</i> ). . . . .	1.00	.10
<i>Foxglove</i> , in fine varieties. . . . .	1.00	.10
<i>Gaillardia Lorenziana</i> , double orange flowers. . . . .	1.00	.10
<i>Gazania grandiflora</i> , large orange and black flowers. . . . .	1.00	.10
<i>Heliotrope</i> , <i>Chieftain</i> , dark blue, free. . . . .	1.00	.10
“ <i>Snow-wreath</i> , almost white. . . . .	1.00	.10
“ <i>Peruviana</i> , pure lilac. . . . .	1.00	.10
<i>Hydrangeas</i> , in a variety of colors. . . . .		.25
“ Large plants at special prices.		
<i>Hollyhocks</i> , <i>Finest Double</i> , in separate colors. . . . .	1.50	.15
<i>Impatiens Sultani</i> , very profuse blooming, the flowers are single, of a rich magenta color. . . . .	2.50	.25



*Helianthus orgyalis.*



Pompon Dahlia.



*Anthemis tinctoria.*



Jacobean Lily.



*Ismene Knightii.*

	Doz.	Each.
<i>Ipomoea Learii</i> , very large deed blue.....		\$0.25
“ <i>noctileuca</i> (Moon Flower), (Evening Glory), a rapid growing climber, with large pure white flowers .....		.25
“ <i>Brazilian</i> .....		.25
“ <i>Northern Light</i> .....		.25
“ <i>New Japanese</i> .....		.25
<i>Lantanas</i> , in a number of named sorts.....	\$1.50	.15
<i>Lemon Verbenas</i> .....	1.50	.15
<i>Lobelia, Crystal Palace Gem</i> .....	1.00	.10
<i>Maurandya Barclayana</i> , purple and white.....	1.00	.10
<i>Mimulus cupreus</i> (Monkey Flower).....	1.00	.10
<i>Mignonette, Machet</i> , very large flowers.....	1.00	.10
<i>Nasturtium, Tom Thumb</i> , in great variety of colors... .75		.08
“ <i>Double Orange</i> , most abundant blooming, and free growing.....	1.50	.15
“ <i>Double Scarlet</i> .....	1.50	.15
<i>Nierembergia filicaulis</i> (Fairy Flax).....	1.50	.15
<i>Pæonias, Chinese</i> , white, pink and red.....		.25
<i>Passiflora</i> (Passion Flower), in a number of named varieties .....	2.50	.25
<i>Petunias, Single Striped</i> .....	1.00	.10
“ <i>superbissima</i> , extra large fringed flowers... .75		.15
“ <i>Double</i> , in a large number of named sorts, including a collection of the beautiful fringed varieties.....	2.50	.25
“ <i>Giant Ruffled</i> .....	1.50	.15
<i>Phloxes, Hardy</i> , in about twenty-five finest named varieties, including the newest dwarf French hybrids, and the best American seedlings.....	1.50	.15
<i>Pink, Double White Fringed</i> , hardy.....		.50
<i>Plumbago capensis</i> , light lavender, free.....		.25
<i>Polyanthus</i> , in fine varieties.....	1.00	.10
<i>Pyrethrum roseum</i> , several colors, a beautiful, free-blooming hardy plant.....	2.50	.25
<i>Salvia splendens</i> (Scarlet Sage).....	1.00	.10
“ <i>patens</i> , beautiful deep blue.....	2.00	.20
<i>Snapdragons</i> , named colors.....	1.00	.10
<i>Strobilanthes Dyerianus</i> , the leaves are long and pointed, the colors are green, pink and dark violet. .75		.25
<i>Swainsonia galegifolia alba</i> , pure white flowers in long sprays, also excellent for pot culture or decorative purposes .....		.25
<i>Verbenas</i> , strong plants from the finest strains, in a large variety.....	.50	.05

*Seedlings of Annuals* (transplanted), grown from finest strains—Asters, Balsams, Calendula, Centaureas, Marigolds, Japan Pinks, Zinnias, etc. 25c. doz., \$1.50 per 100.

**Bulbous Roots.**

	Doz.	Each.
<i>Amaryllis formosissima</i> (Jacobean Lily).....	\$2.00	\$0.20
“ Fine Named Hybrids .....	50c. to	2.00
<i>Cyclamen Persicum</i> , in variety.....		.25
<i>Gladiolus</i> , Finest Mixed, Selected.....	.75	.08
“ Good Mixture .....	.50	.05
<i>Gloxinias</i> , in very fine named varieties.....		.50
<i>Ismene Knightii</i> .....		.25
<i>Imantophyllum miniatum</i> .....		.50
<i>Lilium auratum</i> , golden banded Lily.....	2.25	.25
“ <i>condidum</i> , white garden.....	1.50	.15
“ <i>Harrissi</i> , Bermuda Lily.....	1.50	.15
“ <i>lancifolium album</i> , white Japan.....	4.00	.40
“ “ <i>roseum</i> , pink Japan.....	2.50	.25
“ <i>longiflorum</i> , pure white.....	1.50	.15
<i>Madeira or Mexican Vine</i> .....	.50	.05
<i>Oxalis lasiandra</i> , summer blooming, excellent for borders, per 100, \$1.00.....	.25	.03
<i>Tuberoses</i> , Dwarf Pearl.....	.25	.05
<i>Zephyranthes alba</i> , white Lily-like flowers.....	.75	.08
“ <i>rosea</i> (Pink Lily), very free blooming..	.75	.08

**Carnations, Monthly.**

Young plants, specially grown for summer flowering, 25c. ea., \$2.50 per doz. Large established plants, 40c. ea., \$4.00 per doz.

<i>American Flag</i> , scarlet striped with white.	<i>Portia</i> , intense scarlet.
<i>Anna Webb</i> , dark crimson.	<i>Pres. Garfield</i> , dark scarlet.
<i>Daybreak</i> , large light pink.	<i>Silver Spray</i> , very pure white, compact habit.
<i>Emily Pierson</i> , large scarlet.	<i>Wm. Scott</i> , deep rose.
<i>Lizzie McGowan</i> , large white.	

*Marguerite*, strong plants in pots, grown from selected seed, \$1.50 doz., 15c. each.

**Cannas, Finest Large Flowering Hybrids.**

Strong roots, growing in 4 inch pots.

Price 25c. ea., \$2.50 per doz.

<i>Acme</i> , large dark orange scarlet.
<i>Alphonse Bouvier</i> , rich brilliant crimson.
<i>Antoine Crozy</i> , intense scarlet, extra large.
<i>Argo</i> , deep orange, banded golden yellow.
<i>Austria</i> , very large canary yellow, shaded silver.
<i>Burbank</i> , immense deep large petaled yellow.
<i>Buttercup</i> , beautiful clear yellow.

- Chas. Henderson*, dark crimson, compact habit.  
*Chicago*, very large vermilion scarlet.  
*Christine*, deep orange, laced with yellow.  
*Defiance*, dark crimson maroon.  
*Dr. McClure*, scarlet, with very broad yellow band.  
*E. G. Hill*, bright scarlet, marbled with carmine.  
*Florence Vaughan*, rich golden yellow spotted with red.  
*Fürst Bismarck*, very large glowing crimson.  
*Gloire de Lyonnaise*, deep bronze scarlet, yellow border.  
*Hamlet*, very large ruby crimson.  
*Hector*, dark crimson scarlet, robust habit.  
*Heroine*, deep scarlet, full round flowers.  
*Italy*, scarlet, with broad yellow border, very large petals.  
*J. D. Cabos*, large apricot orange, large spikes.  
*Jehu*, intense brilliant crimson.  
*Kaiser Wilhelm*, dark maroon crimson.  
*Lorna Doone*, deep pure yellow.  
*Matchless*, deep scarlet, banded golden yellow.  
*Maurice Mussy*, dark purplish crimson.  
*Mme. Crozy*, dazzling scarlet, with yellow border.  
*Mme. Montefiore*, pure yellow, spotted with red.  
*Neander*, orange scarlet, showy dark foliage.  
*Nimrod*, deep scarlet, shaded crimson.  
*Oberon*, dark crimson, with scarlet shadings.  
*Osiris*, shaded red, distinct yellow border.  
*Papa*, immense broad flowers, deep brilliant red.  
*Paul Lorenz*, rich blood red, shaded amaranth.  
*Paul Marquant*, salmon, with carmine shadings.  
*President Carnot*, orange scarlet, shaded with pink.  
*Queen Charlotte*, brilliant orange, with distinct golden bands.  
*Renown*, orange scarlet, superb large dark leaves.  
*Robusta perfecta*, small flowers, large dark foliage.  
*Secretary Stewart*, rich deep glowing red.  
*S. R. Crockett*, large golden yellow, distinct red spots.  
*Talisman*, deep bronze, edged with orange.  
*William I. Beers*, superb pure yellow, spotted scarlet.

### ***Chrysanthemums.***

Early Flowering and Hardy varieties.

Price 10c. each, \$1.00 per doz.

- Amphilia*, bright glowing red, compact flowers.  
*Asie, Mr.*, deep golden bronze, small and profuse.  
*Bob*, deep crimson maroon, medium size.  
*Bullingford, Mrs.*, small white, very profuse.





*Camille d'Arville*, white, salmon center.  
*Chalfant, Clinton*, deep yellow, very double.  
*Diana*, pure white, perfect form and habit.  
*Gayon, M.*, bronze with yellow tips.  
*Gloriosum*, light yellow, very free blooming.  
*Herbaux, M. A.*, deep crimson, compact habit.  
*Lay, Mrs.*, incurved blush white, very double.  
*Meletia, Princess*, white, beautifully fringed.  
*Midge*, pure white, very dwarf.  
*Minerva*, golden yellow, compact.  
*Puritan*, white, free and excellent habit.  
*Solomon, Temple of*, deep yellow, very double.  
*Stella*, dark orange yellow, perfect form.  
*Valensi, Chancellor*, large creamy white.

### **Chrysanthemums.**

(General Collection.)

Price 10c. each; \$1.00 per doz.; \$7.00 per 100 (except when separately priced).

Time of flowering—*E.*=Early; *M.*=medium; *L.*=late.

*Arnold, Hicks (M.)*, old gold and bronze, profuse.  
*Avery, Mrs. C. D.*  
*Barr, Mrs. Jessie (M.)*, compact pure white, free, extra keeping quality.  
*Billings, Judge (M.)*, deep crimson bronze with golden reverse, large incurved flowers.  
*Bird, Lilian B. (M.)*, clear rosy pink, extra large, quilled petals.  
*Black, Louise D. (M.)*, rich orange yellow, very solid, 15c.  
*Bloodgood, Helen (M.)*, large globular pure pink, 15c.  
*Boehmer, Louis (E.)*, (Pink Ostrich Plume).  
*Bonaffon, Major (M.)*, extra large incurved yellow.  
*Bramhall, Georgienne (E.)*, superb yellow, very large and full.  
*Buettner, Gretchen (M.)*, very large pure white.  
*Brown, Miss Kate (E.)*, creamy white, large, full and abundant.  
*Brigand (M.)*, extra large deep rich crimson.  
*Bullock, Mrs. (E.)*, (Domination), pure white, full globular.  
*Childs, Geo. W. (M.)*, rich dark velvet crimson, free.  
*Coles, W. W. (M.)*, large bronze red, shaded copper.  
*Compton, Miss G. (M.)*, deep golden yellow, incurved.  
*Cullingfordii (E.)*, bright crimson, very double, fine form.  
*Dalledouze, Eugene (M.)*, glowing yellow, an immense flower.

- Davidson, Thos.*, deep rose pink, 15c.  
*Davis, G. R. (M.)*, very fine rosy pink, superb habit.  
*Day Dawn (E.)*, creamy white, with lemon center, very full.  
*Dean, Maud (L.)*, extra large clear rosy pink, compact and solid.  
*Dinsmore, W. B.*, large golden yellow, 15c.  
*Don Juan (M.)*, pure white, large anemone center.  
*Eddy, Burt (M.)*, deep glowing crimson, 15c.  
*Ermenilda (M.)*, beautiful pure rose, very large.  
*Fisher's Torch (M.)*, bright fiery red, 15c.  
*Golden Dawn (L.)*, immense deep yellow.  
*Golden Plume (L.)*, rich orange yellow, very profuse bloomer, the best variety for Christmas flowers.  
*Golden Wedding (M.)*, deep yellow, very full and double.  
*Goodman, Mrs. Col. (M.)*, blush white, extra large globular flowers, 15c.  
*Graham Margaret (M.)*, creamy white, exquisite form.  
*Hallock, V. H. (M.)*, beautiful soft pink, very large showy flowers.  
*Hatch, Edward (E.)*, pink, shaded, very free, perfect form.  
*Henderson, Marlon (E.)*, superb yellow, double compact flower, extra early, perfect flowers, being cut by October 10th.  
*Higinbotham, Mrs. (M.)*, enormous bright pink, very free, 15c.  
*Hill, Joey (M.)*, deep velvet red, very profuse.  
*Hill, Mrs. E. G. (E.)*, extra early clear pearl pink, very large double incurved flowers of perfect form.  
*Illuminator (M.)*, large deep yellow, very full, very profuse.  
*Indiana (L.)*, large bright pink, robust habit, 15c.  
*Inter Ocean (M.)*, pearly white, shaded pink, extra.  
*Ingomar.*  
*Invincible (L.)*, the largest white variety, 15c.  
*Jeffords, Margaret (M.)*, bronze yellow, very full double flowers.  
*Jessica (E.)*, large snow white, large flat petals.  
*Jones, Mrs. Jerome (M.)*, immense incurved balls of the purest white, wonderful keeping qualities.  
*Kenmore (L.)*, deep golden yellow, very fine broad petals, 15c.  
*Kingston, Mrs. R. C. (M.)*, pearly white, suffused with pink, very compact and double, 15c.  
*Knowles, Eva (M.)*, bright red, shaded golden chrome color.  
*Lager, Mrs. J. E. (E.)*, clear yellow.  
*Langtry, Mrs. (M.)*, very clear white, long petals.  
*Lincoln, Wm. H. (M.)*, immense double yellow, very double.  
*Lippincott, Mrs. Craige (M.)*, very rich yellow, the petals are long, large and incurved, 15c.  
*Magee, Mrs. Geo. J. (M.)*, pure pink, very double and globular, 15c.  
*Marie Louise (E.)*, beautiful recurved white, extra early.  
*May, Harry (M.)*, dark old gold, broad petals.  
*Modest (M.)*, intense pure yellow, wonderful keeping quality, 15c.  
*Morel, Vivian (E.)*, pale rose, shaded, immense size.

- Morgan, Mrs. Geo. (M.)*, pure light yellow, thick broad petals, beautifully incurved.
- Oakland*, terra cotta bronze, fine form.
- Olympus*, white, shaded pink, large incurved.
- Pacific, Glory of the (E.)*, beautiful pink, dwarf, vigorous habit, large well formed flowers.
- Perrin, Mrs. (M.)*, bright pink, large and globular, 15c.
- Pink Beauty (M.)*, beautiful pure rose, medium size.
- Pitcher and Manda (M.)*, very double flat flowers, center pure white with a clearly defined margin of deep yellow.
- Playfair, Lady*, pearly white, large incurved, 15c.
- Pullman, Miss (M.)*, enormous pure yellow, very double.
- Queen, The (M.)*, extra large size, beautiful globular shape, broad incurved petals, pure white.
- Reynolds, Maud (M.)*, large incurved canary yellow.
- Rieman, H. W. (L.)*, massive golden yellow, 15c.
- Robinson, Mrs. Henry (E.)*, perfect snow white, very large incurved flowers, 15c.
- Roses, Bride of (E.)*, clear rosy pink, very free.
- Rudd, W. N. (M.)*, pale pink, long broad twisted petals.
- Shrimpton, John (E.)*, bright crimson, splendid dwarf habit.
- Simpson, Wm. (E.)*, deep rosy pink, full.
- Slocombe, Emily (M.)*, pure light yellow, thick fleshy petals, very double globular flowers, superb habit.
- Slocombe, Mrs. John H. (E.)*, beautiful creamy white, with large waxy petals, very profuse blooming.
- Smith, Edith (E.)*, superb large white, large flat flowers.
- Spaulding, M. B. (L.)*, fine late golden yellow.
- Spaulding, Miss Gladys (M.)*, compact, snow white.
- Sunderbruch, H. G. (E.)*, very early, deep yellow, 15c.
- Triomphante, La (E.)*, light rose color, globular.
- Twombly, Mrs. H. (E.)*, shaded white, extra size.
- Valiant, Maria*, white with violet center, extra large.
- Vaughan, J. C. (M.)*, deep crimson lake, very profuse.
- Violescent (L.)*, superb blush white, 15c.
- Wanamaker, Miss Minnie (M.)*, ball shaped, snow white, very large flowers of extra substance.
- Westward Ho*, dark orange, very large, 15c.
- White Cap (L.)*, pure white, flat incurved petals.
- Whitnall, C. B. (M.)*, rich deep purplish maroon.
- Willard, C. (E.)*, deep golden yellow, fine habit and free blooming, broad thick petals.

***Dahlias, Strong Plants in Pots.***

15c. each; \$1.50 per dozen.

Large flowering varieties.

*Beppon*, yellow, tipped purple.*Camelliæflora*, pure white, very compact.*Floral Park Jewel*, colors from deep maroon to blush white, often beautifully spotted and variegated, in fact a plant will seldom produce two flowers alike.*East Rock*, white, shaded with pink.*Fern-leaved Beauty*, creamy white, bordered with crimson, finely cut foliage.*Garland*, fawn and deep purple.*Gloire de Lyon*, pure white, fine form.*James Vick*, deep purple maroon, very symmetrical.*Marguerite*, rosy lilac, deeply quilled, very profuse.*Nero*, dark crimson maroon.*Queen Victoria*, brightest yellow, perfect form.*Mercedes*, beautiful large soft pink.*Mrs. Dodds*, deep orange yellow, very double.*Mrs. Wm. Pigott*, very fine clear white.*Queen of Snow*, pure white, dwarf habit.*Sir J. Paxton*, very large shaded buff.*Tommy Green*, very deep maroon, with clear white tips.***Cactus Dahlias.****Blanche Keith*, rich yellow, fine form.*Cochineal*, brilliant crimson, large.*Fire King*, bright fiery red, perfect form.*Juarezii*, dazzling scarlet, very large.*Mrs. J. Douglas*, rich pinkish salmon, very distinct.*Maid of Kent*, crimson cherry, tipped white.*Nymphæa*, clear shrimp pink, shaded with white.*Pearl*, pure white, long symmetrical petals.***Pompon Dahlias.****Aeriel*, deep clear orange buff.*Emotion*, lilac, tipped with crimson.*Guiding Star*, fine pure white, fringed petals.*Guinea Hen*, variegated rose, purple and maroon.*Little Harlequin*, buff, tipped with crimson.*Lurline*, yellow shaded, very compact and free.*Mignon*, bright crimson maroon, very dwarf.*Pearl of Gold*, buff crimson, tipped yellow.*Princess Liebrez*, deep scarlet orange.*Pursuit*, dark maroon purple.*Snowball*, snow white, very double, free flowering and compact habit.*Unermuedlich*, rose and purple.

**Single Dahlias.**

- |  |   |
|--|---|
| <p><i>Christina</i>, large brilliant deep scarlet.</p> <p><i>Clansman</i>, violet purple, banded with lilac.</p> <p><i>Cockatoo</i>, clear brilliant yellow.</p> <p><i>Comet</i>, dazzling scarlet, broad petals.</p> <p><i>Darkness</i>, extra large deep maroon.</p> <p><i>Dazzle</i>, light orange scarlet, very profuse.</p> <p><i>Emma</i>, large lilac pink, marbled white.</p> <p><i>Flame</i>, dark orange scarlet.</p> <p><i>Flower of Gold</i>, deep pure yellow.</p> <p><i>Gaillardia</i>, yellow, striped and blotched scarlet.</p> <p><i>Illuminator</i>, brilliant scarlet, broad petals.</p> <p><i>Leopard</i>, yellow, spotted and striped purple.</p> | <p><i>Mauve Queen</i>, very large clear mauve lilac.</p> <p><i>Mentor</i>, dark purplish crimson.</p> <p><i>Meteor</i>, orange scarlet, shaded maroon.</p> <p><i>Model</i>, yellow, tipped and shaded pink.</p> <p><i>Oberon</i>, light crimson scarlet, very large.</p> <p><i>Oddity</i>, white, spotted and striped bright crimson.</p> <p><i>Sister</i>, vivid, scarlet, finely cut leaves.</p> <p><i>Tiger</i>, yellow, spotted pink and dark maroon.</p> <p><i>Walter Ware</i>, dark crimson violet.</p> <p><i>Whirlwind</i>, pure white, curled petals.</p> <p><i>Wm. Schmidt</i>, white, margined light rose.</p> <p><i>Zanoni</i>, deep crimson, tipped with white.</p> |
|--|---|

**Fuchsias.**

Price from 25c. upwards, according to size.

Those marked (\*) have double corollas.

- Aurora Superba*, orange pink, large flowers.
- Charming*, scarlet tube and sepals, superb habit.
- DeMirble*, rose and violet.
- \**Elm City*, finest dark variety, compact habit.
- Ernest Renan*, white and rose.
- \**Frau Emma Topfer* (Storm King), very large blush white corolla, dwarf habit.
- \**Joseph Rosain*, scarlet and purple, strong habit.
- \**Mme. Bruant*, immense violet crimson.
- \**Mme. Van der Strasse*, large double white corolla.
- Mrs. Bennett*, pink sepals, white tube, early and profuse.
- \**Prince Leopold*, purple corolla.
- Rose of Castile*, white sepals, purple corolla.
- Rose of Denmark*, pale pink.
- Speciosa*, pink and blush.
- Sunray*, variegated foliage.
- Wave of Life*, deep blue corolla, compact habit.

**Geraniums, Double Zonale.**

Price 15c. each; \$1.50 per doz.

*Bishop Wood*, bright scarlet.*Colossus*, rosy crimson.*Friant*, orange scarlet.*Heteranthe*, large brilliant scarlet, strong habit.*Leonard Kelway*, vivid scarlet.*La Favorite*, large pure white.*Le Pilot*, dark scarlet.*Lucrece*, deep rose.*Mme. A. Chevalier*, soft magenta.*Paul Avene*, pure white.*Pellepont*, orange.*Prof. Poirault*, very large clear violet.*Prokop Doubeck*, deep amaranth.*S. A. Nutt*, fiery red.*W. P. Simmons*, very dark crimson.**Geraniums, Single Zonale.**

Price 15c. each; \$1.50 per doz., \$10 per 100. Specimen plants at various prices.

*Arethusa*, salmon pink.*Athlete*, large light scarlet.*Atilla*, deep scarlet.*Brilliant*, deep ruby crimson.*Brutus*, bright scarlet.*Cardinal*, cardinal red.*Castor*, pure scarlet.*Clipper*, dark scarlet.*Criterion*, pink, white center.*Crusader*, white and orange.*Cupid*, magenta rose.*Dandy*, dark crimson*Dazzler*, fiery scarlet.*Eclat*, large light purple.*Eyebright*, brilliant scarlet.*Firefly*, vivid scarlet.*Gauntlet*, violet crimson.*Guiding Star*, cherry and white.*Haidee*, dark ruby scarlet.*Hero*, large deep solferino.*Hogarth*, scarlet and orange.*Jeanne d'Arc*, rose and white.*La Phare*, large deep salmon.*Luna*, pink, white margin.*Luster*, superb clear pink.*Marmion*, carmine crimson.*Miss Sheffield*, rosy pink.*M. Poirier*, carmine.*New Life*, scarlet, striped with white.*Nymph*, large soft pink.*Optima*, solferino.*Oracle*, magenta.*Paragon*, deep violet.*Perle*, pure white.*Purity*, large snow white.*Radiant*, rosy magenta, shaded white.*Rainbow*, orange.*Rose Terry Cook*, cherry pink.*Rover*, dark crimson.*Souv. de Mirande*, pink, bordered rose.*Stobo Castle*, clear rose.*Tapestry*, purple rose, blotched with white.*Universe*, dark scarlet.*Vulcan*, dark vermilion.*Valiant*, dark scarlet, enormous truss.

***Geraniums, Ivy Leaved.***

Price 15c. to 25c. each.

In a variety of the finest double and single named sorts.

***Geraniums, Scented Leaved.***

Price 10c. each; \$1.00 per doz.

***Geraniums, Variegated Leaved.***

Price 15c. each; \$1.50 per doz.

***Geraniums, Show or Stage (Pelargoniums).***

Price 25c. to \$1.00 each.

In a number of the finest large flowering varieties.

---

## Decorative Plants.

Of this class of plants for hall or parlor decoration we offer a good stock of *Ardisia crenulata*, *Asparagus plumosus*, *Asparagus tenuissimus*, *Aspidistras*, *Begonia Rex*, in large variety, *Bromelias*, *Crotons* in varieties, *Cyperus alternifolius*, commonly called Nile Grass or Umbrella Plant. *Dieffenbachias*, *Ficus* or Rubber Plants, in a number of sizes, *Fittonias*, *Ferns*, in great variety, including the popular sorts for house culture, viz.: *Pteris arguta*, *Pteris serrulatus*, and the free-growing "Holly Fern," *Cyrtomium falcatum*, *Genistas*, *Grevillea robusta*, *Hibiscus Cooperi*, *Mahernias* (fine specimens), *Marantas*, in great variety, *Palms*, in a number of sorts medium-sized plants, suitable for house decoration, including *Areccas*, *Latanias*, *Kentias*, *Pritchardias*, *Cocos*, *Seaforthias* and *Rhapis*, *Pandanus Veitchii*, *Pandanus utilis*, *Peperomea maculosa*, *Sansieverias*, and many other varieties of fancy-leaved decorative plants. The value depends so much on the season and condition of the plants, that the actual selling price cannot be positively determined till the season is farther advanced.

## Hardy Herbaceous Plants.

Price 25c. each; \$2.50 per doz., except where separately priced.

- |  |   |
|--|---|
| <p>Achillea filipendula.<br/>         " Japonica.<br/>         " milliaefolium.<br/>         " Ptarmica, fl. pl.<br/>         " " var. Pearl.<br/>         " tomentosa.<br/>         Aconitum versicolor.<br/>         Acorus Japonicus variegatus.<br/>         Ajuga reptans.<br/>         " variegata.<br/>         Allium moly.<br/>         Alyssum saxatile.<br/>         Anemone Pennsylvanica.<br/>         Anthericum ramosum.<br/>         Aquilegia cærulea.<br/>         " chrysantha.<br/>         " fine hybrids.<br/>         Astilbe Japonica.<br/>         " compacta.<br/>         Asperula odorata.<br/>         Astrantia major.<br/>         Aubretia deltoides.<br/>         Balsamita vulgaris.<br/>         Baptistia australis.<br/>         Boltonia latæsquama.<br/>         Bupthalmum cordifolium.<br/>         Cacalia suaveolens.<br/>         Campanula alliariaefolia.<br/>         " carpatica.<br/>         " " albiflora.<br/>         " garganica.<br/>         " glomerata.<br/>         " " plena.<br/>         " grandis.<br/>         " " alba.<br/>         " latifolia.<br/>         " persicifolia alba pl.<br/>         " " plena.<br/>         " macrantha.<br/>         " punctata.<br/>         " pumila.<br/>         " rhomboidea.<br/>         " turbinata.<br/>         " Van Houttei.<br/>         Chelone barbata.<br/>         Cerastium Biebersteinii.</p> | <p>Cerastium tomentosum.<br/>         Chelone glabra.<br/>         Clematis crispa.<br/>         " Davidiana.<br/>         " erecta.<br/>         " integrifolia.<br/>         " Stans.<br/>         Cereopsis auriculata.<br/>         " lanceolata.<br/>         " verticillata.<br/>         Delabargia fragaroides.<br/>         Delphinium grandiflorum.<br/>         " new hybrids.<br/>         Dictamnus Fraxinella.<br/>         " " alba, 50c.<br/>         Dielytra cucullaria.<br/>         " spectabilis.<br/>         Echinacea purpurea.<br/>         Echinops spherœcephalus.<br/>         Epimedium alpinum.<br/>         " macranthum.<br/>         Erigeron aurantiacum.<br/>         Eulalia Japonica variegata.<br/>         Euphorbia corollata.<br/>         Funkia lancæfolia.<br/>         " minor.<br/>         " subcordata.<br/>         " ovata.<br/>         " virida marginata.<br/>         Gaillardia grandiflora.<br/>         Galium mollugo.<br/>         Geranium platypetala.<br/>         Gypsophila paniculata.<br/>         " prostrata.<br/>         Helianthus Maximiliani.<br/>         " multiflorus plenus.<br/>         " orgyalis.<br/>         Helenium autumnale, 50c.<br/>         " macrocephala.<br/>         Heliopsis lævis.<br/>         Hemerocallis flava.<br/>         " fulva.<br/>         " gramineus.<br/>         " Kivanso variegata.<br/>         " rutlans.<br/>         " Thunbergii.</p> |
|--|---|



- Heuchera Americana*.  
 " *sanguinea*.  
*Hieracium aurantiacum*.  
*Iberis Gibraltarica*.  
 " *sempervirens*.  
*Iris cristata*.  
 " *biflorus*.  
 " *Germanica* in vars.  
 " *Kæmpferii* in vars.  
*Lamium maculatum*.  
 " " *album*.  
*Lotus Corniculatus*.  
*Lychnis Chalcedonica*.  
 " " *pleno*, 50c.  
 " *Haageana*.  
 " *viscaria*, fl. pl.  
*Lythrum alatum*.  
 " *roseum*.  
*Neurolooma arabidiflorum*.  
*Oenothera Fraseri*.  
 " *fruticosa major*.  
 " *Missouriensis*.  
*Pæonia albiflora*.  
 " " in vars.  
 " *delicatissima*, 50c.  
 " *fulgida*, 50c.  
 " *officinalis*.  
 " *tenuifolia*, 50c.  
 " " fl. pl., 50c.  
*Papaver bracteatum*.  
 " *Oriente*.  
*Pardanthus Chinensis*.  
*Pentstemon barbatus*.  
 " *digitalis*.  
 " *lævigatum*.  
 " *pubescens*.  
*Phlox amoena*.  
 " *repens*.  
 " *subulata*.  
 " " *albiflora*.  
 " " *Fairest*.  
 " " *Perfection*.  
*Physostegia Virginiana*.  
*Platycodon grandiflorum*.  
 " " *album*.  
 " *Mariense*.  
*Polemonium cæruleum*.  
 " " *album*.  
 " " *plenum*.  
 " *reptans*.  
*Podophyllum peltatum*.  
*Polygonatum giganteum*.
- Polygonum var-oxphyllum*.  
 " *cuspidatum*.  
*Pyrethrum roseum*.  
 " " fl. pl.  
 " " *album*, fl. pl.  
 " *rubrum*.  
 " *uliginosum*.  
*Ranunculus acris*, fl. pl.  
 " *bulbosa*, fl. pl.  
 " *repens*, fl. pl.  
*Rudbeckia fugida*.  
 " *laciniata plena*.  
 " *maxima*, 50c.  
 " *triloba*.  
*Salvia pratensis*.  
*Sanguisorba Canadensis*.  
*Saxifraga ceratophylla*.  
 " *aizoon*.  
*Sedum Fabarii*.  
 " *Sieboldii*.  
 " " *variegatum*.  
 " *acre*.  
 " *spectabile*.  
*Sempervivum calcareum*.  
*Silene alpestris*.  
 " *maritima*.  
*Solidago speciosa*.  
*Spiræa Aruncus*.  
 " *digitata*.  
 " *Filipendula*, fl. pl.  
 " *Ulmaria*, fl. pl.  
 " " *variegata*.  
 " *palmata*.  
 " *lobata*.  
*Stenactis speciosa*.  
*Stokesia cyanus*.  
*Tellimia grandiflora*.  
*Thalictrum adiantoides*.  
 " *speciosum*.  
*Tradescantia Virginica*.  
 " " *albiflora*.  
 " " *pilosa*.  
*Tricyrtis hirta*.  
*Trollius Europæus*.  
*Veronica Austriaca*.  
 " *gentianoides*.  
 " *subsessile*.  
 " *spicata*.  
*Veratrum nigrum*.  
*Viola cornuta*.  
 " *striata*.  
*Vitis heterophylla*.

**Hardy Running Vines.**

	Each.
<i>Aristolochia siphon</i> .....	\$0.75
<i>Akebia quinata</i> , curious chocolate flowers.....	.50
<i>Ampelopsis Veitchii</i> , fine, hardy creeper, per doz. \$2.50.....	.25
<i>Bignonia radicans</i> (Trumpet Creeper).....	.50
Honeysuckle, Chinese, very fragrant, per doz. \$2.50.....	.25
"    White Japan, sweet scented monthly, \$2.50.....	.25
"    Variegated Japan, per doz. \$2.50.....	.25
Ivy, English ( <i>Hedera</i> ), several distinct sorts, \$1.50 doz.....	.15
<i>Lycium Chinese</i> , Chinese Matrimony Vine.....	.50
Roses, hardy running.....	.50
<i>Vitis versicolor</i> , Syn. <i>Ampelopsis tricolor</i> .....	.25
<i>Wistaria Sinesis</i> , deep purple, rapid climber.....	.50
" <i>frutescens</i> , American Wistaria.....	.50
" <i>Sinensis alba</i> , white.....	.50

**Ornamental Leaved Plants.**

For ribbon beds, or masses.

	Doz.	Each.
<i>Alternantheras</i> , in varieties, per 100, \$5.00.....	\$0.75	\$0.08
<i>Achyranthes</i> , " " 100, 5.00 .....	.75	.08
<i>Caladium esculentum</i> , enormous green leaves.....	2.00	.20
Castor Oil Plant, several varieties.....	1.50	.15
<i>Cannas</i> , in fine named varieties.....	2.50	.25
"    Crozy's New Hybrids.....	2.50	.25
<i>Centaurea candidissima</i> , very white leaves.....	1.50	.15
" <i>gymnocarpa</i> .....	1.00	.10
<i>Cineraria maritima</i> (Dusty Miller).....	1.00	.10
<i>Coleus</i> , in great variety, per 100, \$5.00.....	.75	.08
<i>Crotons</i> , in finest named sorts.....		.75
<i>Echeverias</i> , in great variety.....	2.50	.25
<i>Feverfew</i> (Golden Feather), per 100, \$5.00.....	.75	.08
<i>Geraniums</i> , variegated leaved.....	1.50	.15
<i>Sempervivums</i> , in variety.....	2.50	.25
<i>Strobilanthes Dyerianus</i> .....	2.50	.25

**Pansies.**

Price 5c. each; 50c. per doz.; \$4.00 per 100.

To the culture of this favorite flower we have devoted great attention, and can offer a strain that for size of flower, perfect form and diversity of colors is unsurpassed.

**Plants for Baskets and Vases.**

	Doz.	Each.
<i>Abutilon vexillarium</i> , yellow marbled leaves.....	\$1.50	\$0.15
<i>Begonia Rex</i> , in varieties.....	2.50	.25
<i>Cacalia scandens</i> (German Ivy).....	1.00	.10
Canary Bird Flower.....	.75	.08
<i>Cobæa scandens</i> , rapid growth.....	2.50	.25
Crotons, in great variety, 25c. up.		
<i>Cyperus alternifolius</i> , beautiful palm-like foliage.....	2.50	.25
<i>Dracænas</i> , in variety, 25c. up.		
<i>Echeverias</i> , in variety.....	2.50	.25
<i>Euonymus</i> , in variety.....	2.50	.25
<i>Farfugium grandis</i> , large spotted leaves.....		.25
“ <i>argentea</i> , silvery edged leaves.....		.25
Ferns, in great variety.....	2.50	.25
<i>Ficus stipulata</i> , neat drooping habit.....		.25
“ <i>elasticus</i> (Rubber Plant).....		.50
Geraniums, large specimens.....		.50
<i>Glechoma hederacea variegata</i> , variegated leaved “Ground Ivy”.....	2.50	.25
<i>Hedera</i> , English Ivy, several varieties.....	1.50	.15
Honeysuckle, Variegated Japanese.....	2.50	.25
<i>Hydrangea Japonica variegata</i> .....		.25
<i>Linaria Cymbalaria</i> , Kenilworth Ivy.....	1.00	.10
<i>Lophospermum scandens</i> , large pink flowers.....	1.50	.15
<i>Lobelia</i> , in several colors.....	1.00	.10
<i>Manettia bicolor</i> , scarlet and yellow.....	2.50	.25
Marantas, in variety, 25c. up.		
<i>Maurandya Barclayana</i> , blue and white.....	1.00	.10
<i>Mesembryanthemus</i> , several varieties.....	1.50	.15
<i>Mimulus moschatus</i> , Musk Plant.....	1.00	.10
<i>Othonna crassifolia</i> , profuse blooming yellow.....	1.50	.15
Palms, in variety, 50c. to \$3.00.		
<i>Pandanus</i> , three varieties, 75c. up.		
<i>Pelogyne suave</i> , very rapid growth.....		.25
<i>Peperomea maculosa</i> .....		.25
<i>Polygonum complexum</i> , very small foliage.....		.25
<i>Saxifraga sarmentosa</i> , striped leaves.....	1.50	.15
<i>Sedum Sieboldii Variegatum</i> .....		.25
Selaginellas, in great variety.....	1.50	.15
<i>Solanum jasmminoides grandiflorum</i> , rapid growing climber, most profuse blooming, excellent for vases or for verandah decoration.....	2.50	.25
<i>Thunbergia</i> , in various colors.....	.75	.08
<i>Vinca major</i> (Periwinkle).....	2.50	.25
“ <i>variegata</i> , green and white.....	2.50	.25
“ <i>minor</i> , erroneously called “myrtle”.....	1.00	.10
“ <i>flora albo</i> .....	1.00	.10

*Roses, Everblooming or Monthly.*

Strong two year old plants, 40c. each; \$4.00 doz.

“ one “ “ “ 25c. “ 2.50 “

*Agrippina*, rich dark crimson, very profuse, fragrant.

*Bon Silene*, deep pink, very strongly tea-scented.

*Bridesmaid*, deep brilliant pink, very large long bud, the improved Catherine Mermet.

*Clothilde Soupert*, pure white with deep pink center, very double and profuse, perfectly hardy.

*Comtesse Riza du Parc*, deep coppery pink, fine large buds, very strongly scented.

*Daily China* (Pink Daily), small flowers, perpetual bloomer.

*Duchess of Brabant*, pink-shaded carmine rose, very sweet.

*Hermosa*, bright pink, double cup-shaped, constantly in bloom.

*Kaiserin Augusta Victoria*, immense creamy white.

*Mignonette* (*Polyantha*), deep pink, continuous blooming.

*Meteor*, deep crimson scarlet, very prolific.

*Mme. Hoste*, light cream color, large fine buds, remarkable keeping variety.

*Mme. de Watteville*, blush white, margined with pink, very strong tea fragrance.

*Mrs. Degraw*, deep pink, full, double flat flowers, free blooming, very sweet and perfectly hardy.

*Niphetos*, pure white, very fine long buds.

*Papa Gontier*, deep carmine red, long pointed buds.

*Perle des Jardins*, deep yellow, large full double flowers.

*Reine Marie Henriette*, deep cherry red, very large beautiful buds, generally hardy.

*Safrano*, salmon yellow, semi-double, very abundant blooming, vigorous growth.

*Souv. de Malmaison*, blush pink, very full and double, exquisite fragrance.

*Souv. de Pres. Carnot*, pink with white shadings, magnificent long buds, free growing, with vigorous, handsome foliage, young plants, 50c.

*Souvenir de Wooton*, very double and fine form, color a carmine shade of crimson, deliciously scented.

*The Bride* (White Mermet), fine large flowers, clear white, very full, solid buds.

**Roses, Hybrid Perpetual.**

AND OTHER HARDY VARIETIES.

Price, 2 yr. old plants, in 5 or 6 in. pots, 50c. each; \$5.00 per doz.

“ I “ “ “ in 4 in. pots, 30c. each; \$3.00 per doz.

*Appoline* (Bourbon), rosy pink, large cupped flowers, blooming continually through the summer.

*Achille Gonod*, violet crimson, large double and profuse.

*Baroness Rothschild*, pure rose color, magnificent form and texture.

*Capt. Christy*, delicate flesh color, beautiful buds.

*Caprice*, deep crimson, with clear white stripes.

*Coquette des Alpes*, blush white, medium size, very profuse.

*Dinsmore*, dark violet crimson, full, sweet and very prolific.

*Gen. Jacqueminot*, brilliant crimson, beautiful buds, very free.

*Henri Martin* (Moss), dark rose color.

*La France*, silvery rose changing to pink, very sweet and free flowering, exquisite fragrance.

*Louis Van Houtte*, crimson maroon, medium size, full semi-globular, highly perfumed.

*Mabel Morrison*, shell pink, almost white, beautiful form.

*Magna Charta*, pink shaded carmine, very full and fragrant.

*Mme. Georges Bruant* (hybrid *Rugosa*), paper white, very hardy.

*Mme. Lamoricere*, violet rose, one of the most fragrant of all roses.

*Mme. Plantier* (Hybrid China), pure white, the most useful variety for cemetery decoration.

*Mme. Trotter* (Hybrid China), bright cherry red, beautiful buds, very hardy, vigorous growth.

*Mrs. Cleveland*, waxy flesh color, full and double.

*Paul Verdier*, carmine red, very fragrant double globular flowers, vigorous habit.

*Prince de Rohan*, very dark velvet crimson.

*Princess Adelaide* (Moss), pure rose color.

*Ulrich Brunner*, carmine crimson, very full, double and sweet.

**Roses, Hardy Running.**

Price 50c. each, strong plants, grown in pots.

*Aryshire*, double white, very rapid climber.

*Crimson Rambler*, deep crimson flowers, a very rapid climber; the flowers are produced in such profusion that the whole plant is often a mass of bloom.

*Empress of China*, commences to flower in June and remains in bloom continuously till fall; it is perfectly hardy, in vigor of growth it is unsurpassed; the color is dark red and changes as the flower opens to a light pink.

*Pink Boursault*, double pink flowers of great substance.

*Queen of the Prairie*, reddish carmine, vigorous.

*Russell's Cottage*, deep purplish red, large clusters.

*Yellow Rambler (Aglaia)*. This rose is an even more valuable introduction than the *Crimson Rambler*, for it is the *hardenest yellow climbing rose* yet introduced, and the quality of hardiness has been an extremely difficult one to combine with yellow color. It has withstood, unprotected and without injury, a prolonged temperature of from zero to two degrees below, and we believe that, with very slight attention, it can be grown everywhere that other roses succeed.

*Pink Rambler*.

*White Rambler*.

### ***Fergeries for Table Decoration.***

We make a specialty of filling fergeries, and grow a large stock of small ferns particularly adapted for this purpose; the work is carefully done, and we take special care to insure a proper combination of varieties to produce the best effect.

### ***Trees, Shrubs, Vines, Evergreens, Berries, Etc.***

By special arrangement with the **ELM CITY NURSERY CO.** Orders for the above line of stock will receive our prompt attention. Catalogues can be obtained at the store.





Our Catalogue

OF

Dutch  
Bulbous  
Roots

Imported direct from  
one of the most cele-  
brated growers in  
Holland, and guaran-  
teed first-class and  
true to name and  
color.

Will be Published  
about Sept. 1st.

Mailed Free to  
Applicants.

Address,



ROBERT VEITCH & SON, NEW HAVEN, CONN.



WE grow a large proportion of the flowers we sell, and our principal aim is to secure freshness and quality.

We try to have a steady supply of the popular standard varieties, and also furnish our patrons with many of the unusual flowers that may be in season, such as Acacias, Anemones, Camellias, Cypripediums and other Orchids, Irises, fancy Pansies, Poinsettias, Ranunculus, Stephanotis, Swainsonia, etc.

Special efforts have been made to have a daily supply of strictly fresh Roses, Carnations, Violets, Heliotrope and Mignonette. In the matter of bulbous flowers we anticipate a very large stock.

Smilax, Asparagus, Ferns, Ivy, Geranium and Galax Leaves.

Basket and design work executed at short notice, with taste and original conception of design.



VEITCH THE FLORIST  
974 CHAPEL ST.